

CARMELA

Grab and Go

QUICK BITES, BIG FLAVOR





bakerly®

BAKERLY

- CREPES STRAWBERRY FILLED 9/6 PK
- 9/6 PK - 00602BA
- CREPES CHOCOLATE FILLED 9/6 PK
- 9/6 PK - 00603BA
- CREPES BLUEBERRY FILLED 9/6 PK
- 9/6 PK - FGS00206
- FRENCH PANCAKES
- 8/7.4 OZ - 81031





ANN ARBOR TORT
ORIGINAL TORTILLA CHIPS 8 OZ
 12/8 OZ – AATF101
GARLIC TORTILLA CHIPS 8 OZ
 12/8 OZ – AATF105
CHILI LIME TORTILLA CHIPS 8 OZ
 12/8 OZ – AATF108
LIME TORTILLA CHIPS 8 OZ
 12/8 OZ – AATF110



i Bibanesi



BIBANESI
BREADSTICK CHUNKY E.V.O.O.
 24/3.5 OZ – 00108B



BIANCA'S BREADSTICKS
BREADSTICKS EVERYTHING
 10078 – 12/7 OZ
BREADSTICKS GARLIC HERB
 10046 – 12/7 OZ



AVALON BAKERY
SEA SALT CHOC CHUNK COOKIE RETAIL
 9/6 PK – 34267A
PEANUT BUTTER COOKIE RETAIL
 9/6 PK – 34274A
TRAIL MIX OATMEAL RAISIN COOKIE
 9/6 PK – 34311A
DOUBLE CHOC PLANT BASED COOKIE RET
 9/6 PK – 34328A



BOB'S RED BARS
PEANUT BUTTER & JELLY OAT BAR
 12/1.76 OZ – 00902
PEANUT BUTTER & CHOCOLATE OAT BAR
 12/1.76 OZ – 02902
PEANUT BUTTER & COCONUT OAT BAR
 12/1.76 OZ – 04902
PEANUT BUTTER & BANANA OAT BAR
 12/1.76 OZ – 08902
GF APPLE CINNAMON OATMEAL CUP
 12/2.36 OZ – 08902
GF BLUEBERRY HAZELNUT OATMEAL CUP
 12/2.5 OZ – 01184
GF CLASSIC OATMEALCUP
 12/1.81 OZ – 01284
GF MAPLE BROWN SUGAR OATMEAL CUP
 12/2.15 OZ – 03184



CHEEZE KURL
CHEEZE KURLS
 12/13 OZ – 00161CK



ASTURI
SALT & EXTRA VIRGIN O.O. BREADSTICK
 12/4.23 OZ – 0034A
ROSEMARY & E.V.O.O. BREADSTICK
 12/4.23 OZ – 00346A



BRUSCHETTINI CLASSIC EVO/SEA SALT
 12/4.23 OZ – 103009
BRUSCHETTINI ROSEMARY & OLIVE OIL
 12/4.23 OZ – 103016
BRUSCHETTINI BLACK & GREEN OLIVES
 12/4.23 OZ – 103023
BRUSCHETTINI W GARLIC & HERB
 12/4.23 OZ – 103153
BRUSCHETTINI W BLACK PEPPER
 12/4.23 OZ – 103160
BRUSCHETTINI TOMATO,CAPERS & OLIVE
 12/4.23 OZ – 103481
BRUSCHETTINI MULTIGRAIN
 12/4.23 OZ – 103498



CLASSICO CRISPREAD
 10/3.53 OZ – 00350
ROSEMARY CRISPREAD
 10/3.53 OZ – 00351
OREGANO CRISPREAD
 10/3.53 OZ – 00352



CHERRY BAY

DRIED CHERRY JUBILEE
6/6 OZ - 00037C

DRIED CHERRY BLEND
6/6 OZ - 00044C

DARK CHOCOLATE COVERED CHERRIES
6/6 OZ - 00048C

MILK CHOCOLATE COVERED CHERRIES
6/6 OZ - 00049C

NO ADDED SUGAR DRIED CHERRIES
6/4 OZ - 00056C

100% MONTMORENCY CHERRY JUICE
6/32 OZ - 00068

TART MONTMORENCY CHERRY JUICE
9/12 OZ - 00080C

BAG DRIED BLUBERRIES 6 OZ
6/6 OZ - 000455

BAG DRIED MONTMORENCY CHERRIES 6 OZ
6/6 OZ - 000509

DRIED ORGANIC MONTMORENCY CHERRIES
6/4 OZ - 0406MC



CRISTAL

ROLL ARTISAN SANDWICH SLD 4 PACK
65474 - 12/11.49 OZ

BUN ARTISAN BAGEL 4 PACK
65478 - 15/7.76 OZ

BUN ARTISAN BURGER 4 PACK
65847 - 18/9.17 OZ

BUN ARTISAN BEER 2 PACK
80032 - 28/6.7 OZ

BUN ARTISAN SEEDED 2 PACK
80033 - 28/6.7 OZ

ROLL ARTISAN SANDWICH SLD 2 PACK
83769 - 24/6 OZ

BUN ARTISAN GOUDA 2 PACK
85408 - 28/6.7 OZ

BREAD ARTISAN SLICED 5 PACK
85418 - 23/8.8 OZ



COCO BITEZ

ORIGINAL BITEZ 12/5 OZ - 00005C

CHOCOLATE BITEZ 12/5 OZ - 00008C



DAVE'S SWEET TOOTH TOFFEE

MILK CHOCOLATE TOFFEE
12/4 OZ - 00301D

DARK CHOCOLATE TOFFEE
12/4 OZ - 00304D

PEANUT BUTTER CRUNCH TOFFEE
12/4 OZ - 00316D

DARK CHOCOLATE CHERRY TOFFEE
12/4 OZ - 003175D



DOWNEY'S CHIPS

NO SALT KETTLE CHIPS
12/8 OZ - 00500

SEA SALT KETTLE CHIPS
12/8 OZ - 00501

VINEGAR & SEA SALT KETTLE CHIPS
12/8 OZ - 00502D

BARBEQUE & SEA SALT KETTLE CHIPS
12/8 OZ - 00503D



DITSCH

INDIVIDUALLY WRAPPED
33/5 OZ - 1120

HAMBURGER PRETZEL BUN 4 OZ - CLEAR
10/4 PK - 6350

PRETZEL BITE TUB 1.5 LB
8/1.5 LN - 7321



La Moutarde de qualité depuis 1840



FALLOT

MUSTARD DIJON MINI
2368 - 24/0.88 OZ

MUSTARD DIJON WHOLE GRAIN MINI 3474
3474 - 24/0.88 OZ



EURO CLASSIC

ROLLS BRIOCHE BLBRY 4 COUNT
33028 - 18/11 OZ

ROLLS BRIOCHE CINNAMON 4 COUNT
45700 - 18/11 OZ

ROLLS BRIOCHE PSTRY CREME 4 COUNT
53476 - 18/11 OZ

ROLLS BRIOCHE LEMON 4 COUNT
58703 0 18/11 OZ



EL MATADOR

TORTILLAS
12/16 OZ - S20751

SWEET/SPICY SALSA
12/16 OZ - S00480

DI BRUNO BROS.
CULINARY PIONEERS SINCE 1939



DI BRUNO BROS

- GRISSINI SESAME BREADSTICK
11/8.8 OZ - 05290
- GRISSINI OLIVE OIL BREADSTICK
11/8.8 OZ - 05313
- CHEESE SPREAD SMOKED GOUDA & BEER
6/7.6 OZ - 05634
- CHEESE SPREAD PINOT GRIGIO & FIG
6/7.6 OZ - 05641
- CROSTINI TRUFFLE
18020 - 12/7.04 OZ
- CROSTINI PROSCIUTTO
18030 - 12/7.04 OZ
- CROSTINI OLIVE OIL
6/7.6 OZ - 05634
- CROSTINI SEA SALT
12/7.04 OZ - 60129
- CROSTINI ROSEMARY
12/7.04 OZ - 60136
- CROSTINI PARM & PECORINO
12/7.04 OZ - 60150
- CROSTINI GARLIC
12/7.04 OZ - 60167



- TARALLI CLASSIC
60891 - 12/8.8 OZ
- TARALLI AMATRICIANA (TOMATO)
60914 - 12/8.8 OZ
- TARALLI CACIO & PEPE
60921 - 12/8.8 OZ

FERRIS

COFFEE & NUT CO



SNACK MIXES, NUTS & SAVORY SNACKS

- PRETZEL - PB FILLED - 12/9 OZ DELI
12/9 OZ - 63009
- COUNTRY MIX W/ M&M'S
12/11 OZ - 63323
- SPICY SWEET MIX
12/8 OZ - 63328
- PB&J MIX
12/10 OZ - 63380
- ALMONDS CINNAMON ROASTED
12/10 OZ - 63346
- SUNFLOWER SEEDS ROASTED
12/9 OZ - 63371
- PEAS WASABI
12/7 OZ - 63366
- SESAME STICKS HONEY ROASTED
12/9 OZ - 63609
- YOGURT RAISINS
12/14 OZ - 63309
- YOGURT PRETZELS
12/8 OZ - 63603
- DRIED BANANA CHIPS
12/7 OZ - 63604

GUMMI & CANDY

- FRUIT SLICES
12/12 OZ - 63332
- ORANGE SLICES
12/12 OZ - 63333
- CHERRY SLICES
12/12 OZ - 63390
- SPICE DROPS
12/14 OZ - 63334
- GUMMI PEACH RINGS
12/12 OZ - 63337
- GUMMI BEARS
12/12 OZ - 63338
- GUMMI WORMS
12/12 OZ - 63340
- NEON GUMMI WORMS
12/12 OZ - 63339
- GUMMI MINI NEON SOUR WORMS
12/5 OZ - 64223
- WRAPPED SALT WATER TAFFY
12/12 OZ - 63392



CHOCOLATE COVERED SNACKS

- PB CUP - MINI DK CHO - 12/9 OZ DELI
12/9 OZ - 63007
- MILK CHOCOLATE DD PEANUTS
12/11 OZ - 63304
- MILK CHOCOLATE ALMONDS
12/12 OZ - 63301
- MILK CHOCOLATE RAISINS
12/14 OZ - 63305
- MILK CHOCOLATE MALT BALLS
12/14 OZ - 63306
- MILK CHOCOLATE PRETZELS
12/8 OZ - 63601
- POTATO CHP DRK CHOC CVRD DELI
TUB12/9 OZ - 63010



- BLACK TRUFFLE CASHEWS
60300 - 12/4.5 OZ
- DILL PICKLE CASHEWS
60301 - 12/4.5 OZ
- STREET TACO CASHEWS
60302 - 12/4.5 OZ
- HATCH CHILI CASHEWS
60303 - 12/4.5 OZ
- TUSCAN PIZZA CASHEWS
60304 - 12/4.5 OZ
- UMAMI RAMEN CASHEWS
60305 - 12/4.5 OZ



DOWNRIVER CHIP CO.

SALTED CORN CHIPS – BULK
1116 – 15/16 OZ

SALTED – CORN TORTILLA CHIPS
1379 – 12/6 OZ

PICO DE GALLO – CORN TORTILLA CHIPS
1386 – 12/6 OZ

CHILOSO – CORN TORTILLA CHIPS
1393 – 12/6 OZ

GUAC – CORN TORTILLA CHIPS
1409 – 12/6 OZ

SEÑORITA PITA – SALTED
1413 – 12/7 OZ

SEÑORITA PITA – SUNNY BASIL
1423 – 12/7 OZ

SEÑORITA PITA – ROASTED JALAPEÑO
1430 – 12/7 OZ

SEÑORITA PITA – GARLIC HERB
1447 – 12/7 OZ

SEÑORITA PITA – ZA'ATAR
1454 – 12/7 OZ



FANCY PANTS

FANCYPANTS CHOCOLATE CHIP COOKIES
31103 – 6/5 OZ

FANCYPANTS SALTED CARAMEL COOKIES
31127 – 6/5 OZ

FANCYPANTS S'MORES COOKIES
31158 – 6/5 OZ

FANCYPANTS GLUTEN FREE CHOC CHIP
31271 – 6/5 OZ



FEEL

MINT CHOCO CHIP BARS
10/2 OZ – 2268

SUNBUTTA CHOC CHIP BARS
10/2 OZ – 41234

CARAMEL SEA SALT BARS
10/2 OZ – 4627

VANILLA SPICE BARS
10/2 OZ – 8966

MATCHA LATTE BARS (CAFFENIATED)
10/2 OZ – 9702

GOLDEN GOODNESS BARS
10/2 OZ – 9719

BROWNIE CHOCO CHIP BARS
10/2 OZ – 9788

BROWNIE BATTER MINI BAGS
12/1.2 OZ – 50601F

COOKIE DOUGH MINI BARS
12/1.2 OZ – 50649

BIRTHDAY CAKE MINI BARS
12/1.2 OZ – 50663

BLUEBERRY MUFFIN MINI BARS
12/1.2 OZ – 50687



FIREHOOK SNACK

ROSEMARY SEA SALT SNACK BOX
8/5.5 OZ – 001229

SEA SALT SNACK BOX
8/5.5 OZ – 001243

MULTIGRAIN ZA'ATAR SNACK BOX
8/6 OZ – 001250

MULTIGRAIN FLAX SNACK BOX
8/6 OZ – 001267

GARLIC & THYME SNACK BOX
8/5.5 OZ – 001281

EVERYTHING SNACK BOX
8/5.5 OZ – 002513

AVOCADO OIL SS & CHIVE SNACK BOX
31077 – 8/5.5 OZ



LA FIESTA GRANDE

TORTILLA CHIPS
12/14 OZ – 21970

MILD MANNERED SALSA ROJA 6 PACK
6/16 OZ – 57000F

SWEET N SASSY SALSA ROJA 6 PACK
6/16 OZ – 57001FF

HOLY SMOKES CHIPOLTE SALSA 6 PACK
6/16 OZ – 57002F

HOT TEMPERED SALSA ROJA 6 PACK
6/16 OZ – 57003F



FRY DADDY

ORIGINAL MIX 12/12 OZ – S66950

CHEDDAR MIX 12/12 OZ – S66952

RANCH MIX 12/12 OZ – S66953

GLUTEN FREE ORIGINAL MIX 12/10 OZ – S66954

GLUTEN FREE RANCH 12/10 OZ – S66957



GREAT LAKES POT PIE

CINNAMON SUGAR PIE CHIPS
8/5.5 OZ – 863752



GREAT LAKES 14 OZ

ORIGINAL 8/14 OZ – 00825GL

ORIGINAL WAVE CUT 8/14 OZ – 00826GL

CHERRY BBQ 8/14 OZ – 00827GL

SEA SALT AND PEPPER 8/14 OZ – 00828GL

PARMESAN RANCH 8/14 OZ – 00830GL

JALAPENO RANCH 8/14 OZ – GL850



GREAT LAKES CHIP 5 OZ / 8 OZ

- PURPLE POTATO 12/5 OZ - 00809
- ORIGINAL 12/8 OZ - GL102
- BBQ 12/8 OZ - GL202
- BUFFALO WING 12/8 OZ - GL302
- PARMESAN RANCH 12/8 OZ - GL502
- CHERRY BBQ 12/8 OZ - GL402
- SEA SALT & VINEGAR 12/8 OZ - GL602
- SEA SALT, PEPPER ONION 12/8 OZ - GL702
- ORIGINAL WAVE 12/8 OZ - GL802
- WISCONSIN CHEDDAR 12/8 OZ - GL833
- JALAPENO RANCH 12/8 OZ - GL848



HUDSON HENRY

- MAPLE WALNUT 420009 - 6/8 OZ
- MAPLE PECAN 430009 - 6/8 OZ
- PISTACHIO ALMOND 440004 - 6/8 OZ
- CASHEW COCONUT 450004 - 6/8 OZ
- THE OG ORIGINAL (12 OZ) 480004 - 6/12 OZ



ITALIAN BROS

- PLAIN CORNMEAL BREADSTICKS 1008 - 14/8 OZ
- SESAME SEED BREADSTICKS 1009 - 14/8 OZ
- PLAIN CORNMEAL BREADSTICKS 1016 - 12/16 OZ



GREAT LAKES CHIP 1.37 OZ

- ORIGINAL POTATO CHIPS 1.375 OZ 40/1.375 OZ - GL144
- BBQ POTATO CHIPS 1.375 OZ 40/1.375 OZ - GL204
- BUFFALO WING POTATO CHIPS 1.375 OZ 40/1.375 OZ - GL304
- CHERRY BBQ POTATO CHIPS 1.375 OZ 40/1.375 OZ - GL404
- PARMESAN RANCH POTATO CHIPS 1.375 OZ 40/1.375 OZ - GL504
- SEA SALT AND VINEGAR CHIPS 1.375 OZ 40/1.375 OZ - GL604
- SEA SALT, PEPPER, ONION CHIP 1.37 OZ 40/1.375 OZ - GL704
- WISCONSIN CHEDDAR 1.375 OZ 40/1.375 OZ - GL836
- JALAPENO RANCH 1.375 OZ BAG 40/1.375 OZ - GL849



JOE POP

- SEA SALT POPCORN 24/0.9 OZ - 04108
- SWEET & SALTY POPCORN 24/1.5 OZ - 04115
- WHITE CHEDDAR POPCORN 24/1 OZ - 04122



JOE SNACK

- CHEDDAR SNACK MIX 24/3.5 OZ - 04795
- ORIGINAL SNACK MIX 24/3.5 OZ - 04801
- S'MORE'S SNACK MIX 24/5 OZ - 04825



HARIBO CANDY

- GOLD BEARS 5OZ 12/5 OZ - 30221
- THE SMURFS 12/4 OZ - 30501
- SOUR SMURFS 4 OZ 12/4 OZ - 30504
- HAPPY CHERRY CANDY 12/5 OZ - 30977
- SOUR GOLD BEARS 4.5 OZ 12/4.5 OZ - 31220
- HAPPY COLA CANDY 12/5 OZ - 32364
- FIZZY COLA CANDY 12/5 OZ - 32397
- DINOSAURS 12/5 OZ - 34120
- SOUR S'GHETTI CANDY 12/5 OZ - 35889
- ALPHABET LETTERS 12/5 OZ - 36909
- TWIN SNAKES 5 OZ 12/5 OZ - 37754
- CANDY PEACHES 12/5 OZ - 38072
- CANDY FROGS 12/5 OZ - 47255
- MINI RAINBOW FROG 12/5 OZ - 47277
- CANDY BERRIES 12/5.29 OZ - 70509
- STARMIX 5OZ 12/5 OZ - 72213



JOE CHIPS

- CLASSIC SEA SALT 12/5 OZ - 001770 28/2 OZ - 00169
- SWEET POTATO 12/5 OZ - 001787
- SEA SALT & VINEGAR 12/5 OZ - 001794
- TOASTED ONION & SOUR CREAM 12/5 OZ - 00169
- BBQ 12/5 OZ - 001817 28/2 OZ - 001701
- BACON CHEDDAR 28/2 OZ - 02203
- DILL PICKLE 28/2 OZ - 02347



MILK CHOC PB CRISPY KADAIFI
6/4.23 OZ - 1872J

MILK CHOC HAZELNUT CRISPY KADAIFI
6/4.23 OZ - 1873J

MILK CHOC STRAWBERRY CRISPY KADAIFI
6/4.23 OZ - 1874J

DUBAI CHOCOLATE FILLED WAFFLE CONE
6/4.23 OZ - 1789

MINI MILK CHOC FILLED WAFFLE CONE
6/4.23 OZ - 1200J

MINI DARK CHOC FILLED WAFFLE CONE
6/4.23 OZ - 1201J

MILK CHOCOLATE MINI BUTTER BISCUITS
6/3.53 OZ - 1396J

DARK CHOCOLATE MINI BUTTER BISCUITS
6/3.53 OZ - 1397J

WHITE CHOCOLATE MINI BUTTER BISCUIT
6/3.53 OZ - 1398J

MINI WHITE CHOC FILLED WAFFLE CONE
6/4.23 OZ - 1400J

MILK CHOC AND HAZELNUT FILLED
6/4.23 OZ - 1420

MILK CHOC AND PEANUT BUTTER FILLED
6/4.23 OZ - 1421J

WHITE CHOCOLATE STRAWBERRY FILLED
6/4.23 OZ - 1422J

MILK CHOCOLATE WITH COCONUT FLAKE
6/4.23 OZ - 1423J

MARSHMALLOW AND MILK CHOC FILLED
6/4.23 OZ - 1436J



KIND BARS

CRANBERRY ALMOND + ANTIOX
12/1.4 OZ - 17211

POMEGRANATE BLUEBERRY PISTACH + ANTIOX
12/1.4 OZ - 17221

DARK CHOC CHERRY CASHEW + ANTIOX
12/1.4 OZ - 17250

PEANUT BUTTER DARK CHOC + PROTEIN
12/1.4 OZ - 17256

ALMOND & COCONUT
12/1.4 OZ - 17828

MADAGASCAR VANILLA ALMOND
12/1.4 OZ - 17850

DARK CHOCOLATE NUTS & SEA SALT
12/1.4 OZ - 17851

MAPLE GLAZED PECAN & SEA SALT
12/1.4 OZ - 17930

BLUEBERRY VANILLA & CASHEW
12/1.4 OZ - 18039

CARMEL ALMOND & SEA SALT
12/1.4 OZ - 18533

DARK CHOCOLATE MOCHA ALMOND
12/1.4 OZ - 18554



KIND CLUSTERS

PEANUT BUTTER WHOLE GRAIN CLUSTERS
6/11 OZ - 17282

VANILLA BLUEBERRY CLUSTERS W/ FLAX
6/11 OZ - 17285

OATS/HONEY CLUST W/ TOASTED COCONUT
6/11 OZ - 17286

CINNAMON OAT CLUSTERS W/ FLAX SEEDS
6/11 OZ - 17284



MITICA

QUICOS GIANT CRUNCHY CORN LARGE TUB
1/3 KG - 69011

MARCONA ALMONDS FRIED & SALTED
1/5 KG - 264

QUICOS GIANT CRUNCHY CORN LARGE TUB
1/3 KG - 69011



EMILY KATE'S

CHOCOLATE CAKE SLICES GF
12/6 OZ - 07246

VANILLA CAKE SLICES GF
12/6.4 OZ - 07253

CARROT CAKE SLICES GF
12/6.4 OZ - 07284

CARROT CUPCAKES 4 PACK GF
12/11 OZ - 07291

VANILLA CUPCAKES 4 PACK GF
12/9.5 OZ - 07253

CHOCOLATE CUPCAKES 4 PACK GF
12/9 OZ - 07338

CHOCOLATE CHIP COOKIES GF
12/8.4 OZ - 07345

SNICKERDOODLE COOKIES GF
12/7.7 OZ - 07352

OATMEAL RAISIN COOKIES GF
12/9.2 OZ - 07376

BAKED CINNAMON ROLLS GF
12/19.5 OZ - 07420

MUFFINS - BLUEBERRY GF
12/16.4 OZ - 07437

MUFFINS - APPLE STREUSEL GF
12/18.3 OZ - 07444



MCCLURES PICKLE

SWEET & SPICY SLICES 16OZ
6/16 OZ - 00109M

SAUERKRAUT 16OZ
6/16 OZ - 00113M

GARLIC DILL WHOLE 16OZ
6/16 OZ - 00175M

BLOODY MARY MIX 16OZ
6/16 OZ - 00197M

SPICY DILL WHOLE 16OZ
6/16 OZ - 00199M

BREAD & BUTTER SLICES 16OZ
6/16 OZ - 78302

SPICY DILL SLICES 16OZ
6/16 OZ - 78323M

GARLIC DILL SLICES 16OZ
6/16 OZ - 78324M



MULINO BIANCO

BAIOCCHI
10/7.05 OZ - B17626

GALLETTI
10/6.34 OZ - B17630

PAN DI STELLE
10/7.05 OZ - B17632

CUORICINI
10/7.05 OZ - B17633



MILL GLEN ARBOR

CRACKER SOURDOUGH EVERYTHING
12/8 OZ - 13133

CRACKER SOURDOUGH ZA'ATAR
12/8 OZ - 13737

CRACKER SOURDOUGH SPICY PIZZA
12/8 OZ - 13836

CRACKER SOURDOUGH SEA SALT
12/8 OZ - 13935



ON THE BORDER

MONTEREY JACK QUESO (19380)
6/15.5 OZ - 07159

MEDIUM SALSA
8/16 OZ - S70016

MILD SALSA
8/16 OZ - S70316

CAFE TORTILLA CHIP (19340/19487)
11/13.2 OZ - S71011

CAFE TORTILLA CHIPS 15OZ (19349)
9/15 OZ - S71015

ROUND TORTILLA CHIPS (19352)
12/10.5 OZ - S71310

FIESTA DIPPIN CHIP
9/8 OZ - S71408

SALSA CON QUESO
6/15.5 OZ - S80215



PIERRE BISCUIT

DK CHOCOLATE SEA SALT COOKIES
10/5.29 OZ - 00011B

LEMON & ALMOND COOKIES
10/5.29 OZ - 00021B

SEA SALT CARAMEL COOKIES
10/5.29 OZ - 00031B

COCONUT COOKIES
10/5.29 OZ - 00041B1

MIXED BERRIES COOKIES
10/5.29 OZ - 00071B

DARK CHOCOLATE COOKIES
12/4.76 OZ - 00081B

MILK CHOCOLATE COOKIES
12/4.76 OZ - 00111B

PURE BUTTER COOKIES
12/4.41 OZ - 00741



PERUGINA BARS

DARK CHOCOLATE CLASSIC BAR 51%
12/3 OZ - C5161

DARK CHOCOLATE & ALMOND BAR
12/3 OZ - C5162

BITTERSWEET CLASSIC BAR 70%
12/3 OZ - C5163

DARK CHOCOLAE ESPRESSO BAR
12/3 OZ - C5177B

EXTRA DARK CHOCOLAE BAR 85%
12/3 OZ - C5181B



POPZUP POPCORN

BUTTER ME UP POPCORN
12/5 OZ - 00034
48/0.52 OZ - 59347

CHEESIE HERBIE POPCORN
12/5 OZ - 000360

MAPLE CINNAMON TOAST POPCORN
12/5 OZ - 00037

BUTTER ME UP POPCORN 2 OZ
18/2 OZ - 59308

CHEDDAR HEAD POPCORN 2 OZ
18/2 OZ - 59315

CHEDDAR HEAD POPCORN
12/5 OZ - 600032
48/0.52 OZ - 59350

TRUFFLE BUTTER AND BLACK PEPPERCORN
12/4 OZ - 65932



OLINA'S

CRACKERS GF FIG AND SUNFLOWER SEED
12/3.5 OZ - 064030

CRACKERS DATE AND APRICOT
12/3.5 OZ - 064100

CRACKERS FIG AND BLACK OLIVE
12/3.5 OZ - 064270

CRACKERS CRANBERRY & SUNFLOWER SEED
12/3.5 OZ - 064340



WAFER CRAKER NATURAL
12/3.5 OZ - 060070

WAFER CRAKER CRACKED PEPPER
12/3.5 OZ - 060140

SEEDED CRISPS CRANBERRY PKIN SEED
12/3.5 OZ - 060450

SEEDED CRISPS CASHEW & ROSEMARY
12/3.5 OZ - 060690

G/F NATURAL WAFER CRAKER
12/3.5 OZ - 06076

CRACKER VARIETY CLUB PACK
12/3.5 OZ - 06608



REKO

DULCE SNACK PACK
12/0.6 OZ - 30138

CINNAMON SNACK PACK
12/0.6 OZ - 30163

VANILLA SNACK PACK
12/0.6 OZ - 34146



MEXICAN STREET CORN PRETZELS
12/7.5 OZ - 38165

THAI HONEY CURRY PRETZELS
12/7.5 OZ - 38166

DUTCH APPLE PIE PRETZELS
12/7.5 OZ - 38177

PEPPERCORN RANCH PRETZELS
12/7.5 OZ - S00517

GARLIC PARMESAN PRETZEL
12/7.5 OZ - S00518

YELLOW MUSTARD PRETZELS
12/7.5 OZ - S00528

HOT SAUCE PRETZELS
12/7.5 OZ - S00529

DILL PICKLE PRETZELS
12/7.5 OZ - S00532

CINNAMON SUGAR PRETZELS
12/7.5 OZ - S00581

GOUDA CHEESE PRETZELS
12/7.5 OZ - S00597

PERRIN BEER CHEESE PRETZELS
12/7.5 OZ - S38132

MAPLE & BROWN BUTTER PRETZELS
12/7.5 OZ - S38137

DILL PICKLE POPCORN
12/5 OZ - 00553

SMOKED GOUDA POPCORN
12/5 OZ - 00596PD

ORIGINAL POPCORN
12/5 OZ - S00511

KETTLE POPCORN
12/6.4 OZ - S00512

WHITE CHEDDAR POPCORN
12/6 OZ - S00513

NATURAL BUTTER POPCORN
12/5 OZ - S00520



POWER UP

ANTIOXIDANT MIX - 4OZ
12/4 OZ - 1501M

MEGA OMEGA TRAIL MIX - 4OZ
12/4 OZ - 1503M

PROTEIN PACKED MIX - 4OZ
12/4 OZ - 1505M

HIGH ENERGY TRAIL MIX - 4OZ
12/4 OZ - 1506M

ANTIOXIDANT MIX
6/13 OZ - 2101

MEGA OMEGA TRAIL MIX
6/14 OZ - 2103

PROTEIN PACKED MIX
6/14 OZ - 2105

HIGH ENERGY TRAIL MIX
6/14 OZ - 2106



RXBAR

BLUEBERRY PROTEIN BAR
12/1.83 OZ - 00419RX

PEANUT BUTTER PROTEIN BAR
12/1.83 OZ - 00420RX

COCONUT CACAO PROTEIN BAR
12/1.83 OZ - 00421RX

CHOCOLATE SEA SALT PROTEIN BAR
12/1.83 OZ - 00423RX

PEANUT BUTTER CHOCOLATE BAR
12/1.83 OZ - 00468RX



313 URBAN

313 URBAN TORTILLA CHIPS CHILI-LIME
12/14 OZ - 13320

313 URBAN TORTILLA SALTED CHIPS
12/14 OZ - 70313

SMACKIN'



SMACKIN'

SMACKIN' SUNFLOWER SEED SHIPPER
48/4 OZ – 865830

HANDCRAFTED
SNACKIOS
BETTER FOR YOU SNACKS™



SNACKIOS

CINNAMON N' SUGAR PITA CHIPS
8/6 OZ – 00519

ZAATAR PITA CHIPS
8/6 OZ – 00526

SEA SALT PITA CHIPS
8/6 OZ – 00533

SOUR CREAM N' ONION PITA CHIPS
8/6 OZ – 00540

EVERYTHING PITA CHIPS
8/6 OZ – 00588

CINNAMON N SUGAR BAGEL CHIPS
8/6 OZ – 00717

ZAATAR BAGEL CHIPS
8/6 OZ – 00724

SEA SALT BAGEL CHIPS
8/6 OZ – 00731

GARLIC N' HERBS BAGEL CHIPS
8/6 OZ – 00748

EVERYTHING BAGEL CHIPS
8/6 OZ – 00786



STEVE'S STOCKED

PITA CHIPS PLAIN
12/8 OZ – 100725

PITA CHIPS GARLIC
12/8 OZ – 100905

GFB
GLUTEN FREE BROTHERS.



THE GFB

GLUTEN FREE BREAKFAST APPLE CINN
6/2 OZ – S00493

GLUTEN FREE BREAKFAST MAPLE RAISIN
6/2 OZ – S00494

GFB
GLUTEN FREE BROTHERS.



THE GFB

CHOCOLATE HAZELNT BITES GF 6PK
6/4 OZ – 000452

DARK CHOCOLATE COCONUT BITES GF 6PK
6/4 OZ – 004036GF

CHOCOLATE CHRRY ALMOND BITES GF 6PK
6/4 OZ – 004046

COCONUT CASHEW CRUNCH BITES GF 6PK
6/4 OZ – 004056

DARK CHOCOLATE PB BITES GF 6PK
6/4 OZ – 004057

PEANUT BUTTER BITES 6 PK
6/4 OZ – 008086

DARK CHOCOLATE ALMOND BITES 6 PK
6/4 OZ – 008130

GFB
GLUTEN FREE BROTHERS.



THE GFB

OATMEAL RAISIN GF BAR
12/2.05 OZ – 00400GF

CRANBERRY & TOASTED ALMOND GF BAR
12/2.05 OZ – 12152

PEANUT BUTTER GF BAR
12/2.05 OZ – 59855

CHOCOLATE PEANUT BUTTER GF BAR
12/2.05 OZ – 59865

GFB
GLUTEN FREE BROTHERS.



THE GFB

GF DARK CHOCOLATE PB BITES 1.2 OZ
10/1.2 OZ – 8963G



EAT LOCAL
TASTES OF THE GREAT LAKES

MILD SALSA

18/14 OZ – 610339

HOT SALSA

18/14 OZ – 610346

MEXICALI DIP 7 OZ

18/7 OZ – 610353

SPINACH DIP – 7 OZ

18/7 OZ – 610360



TCF SINGLE SERV

MONSTER – SINGLE SERVE
12/4.25 OZ – 00790

HOT BLONDE – SINGLE SERVE
12/4.25 OZ – 14220T

KITCHEN SINK – SINGLE SERVE
12/4.25 OZ – 14336

PEANUT BUTTA – SINGLE SERVE
12/4.25 OZ – 14343

ORIGINAL – SINGLE SERVE
12/4.25 OZ – 14770

COOKIE DOH – SINGLE SERVE
12/4.25 OZ – 14886

IT'S YOUR BIRTHDAY – SINGLE SERVE
12/4.25 OZ – 15111

SMORE – SINGLE SERVE
12/4.25 OZ – 15319



IT'S A CLUSTER COOKIES N CREAM
20/7 OZ – 77171

IT'S A CLUSTER KITCHEN SINK
20/7 OZ – 78146

IT'S A CLUSTER PEANUT BUTTER
20/7 OZ – 79006

IT'S A CLUSTER SCOTCHAROO
20/7 OZ – 79009

UNREAL



UNREAL

- DARK CHOC CARAMEL NOUGAT BAR
6/3.4 OZ - 00652U
- DARK CHOC COCONUT BAR
6/4.2 OZ - 00654U
- DK CHOCOLATE PEANUT BUTTER CUPS-BAG
6/4.2 OZ - 05158
- DK CHOCO PEANUT BUTTER CUPS-CADDY
40/0.05 OZ - 05172
- DK CHOCO ALMOND BUTTER CUPS-CADDY
40/0.05 OZ - 05271
- DK CHOCOLATE ALMOND BUTTER CUPS-BAG
6/3.2 OZ - 06307
- MIL CHOCOLATE GEMS -COUNT LINE
12/1.3 OZ - 06406
- DK CHOCOLATE PEANUT GEMS-CADDY LINE
12/1.5 OZ - 06413

whoa!
dough



WHOA DOUGH

- READY TO BAKE SUGAR COOKIE DOUGH
10/1.6 OZ - 34151
- READY TO BAKE CHOCOLATE CHIP COOKIE
10/1.6 OZ - 33856
- READY TO BAKE BROWNIE BATTER DOUGH
6/9 COUNT - 63549
- READY TO BAKE SUGAR COOKIE DOUGH
6/9 COUNT - 73151
- BROWNIE BATTER SNACKABLES 2 COUNT
6/1.55 OZ - 25417
- SUGAR COOKIE SNACKABLES 2 COUNT
6/1.55 OZ - 35413
- CHOCOLATE CHIP SNACKABLES 2 COUNT
6/1.55 OZ - 35420

WHY BARS



WHY BARS

- APPLE ALMOND BARS 12 PACK
12/2.04 OZ - 00115WB
- SUPER CACAO BARS 12 PACK
12/2.04 OZ - 00116WB
- MANGO GINGER BARS 12 PACK
12/2.04 OZ - 00117WB
- CHERRY CHIA BARS 12 PACK
12/2.04 OZ - 00118WB
- CHOCO PEANUT BUTTER BARS 12 PACK
12/2.04 OZ - 00119WB
- BLUEBERRY BLISS 12 PACKS
12/2.04 OZ - 16200WB
- ZESTY LEMON 12 PACK
12/2.04 OZ - 16201WB

Zingerman's



ZINGERMAN'S

- CHOCOLATE PEANUT BUTTER GELATO
6/16 OZ - 7194
- VANILLA GELATO 5OZ
12/5 OZ - 11269
- STRAWBERRY GELATO 5OZ
12/5 OZ - 11276
- DARK CHOCOLATE GELATO 5OZ
12/5 OZ - 11283
- RASPBERRY SORBET 5OZ
12/5 OZ - 11474
- BLUE MOONLIGHT GELATO 5OZ
12/5 OZ - 70667

Meet the Snacks
Satisfy your snack cravings with
a delicious and crunchy twist.

- PUFFZELS-HOMESTYLE SEASONED
6/4.8 OZ - 06401
- PUFFZELS-WHITE CHEDDAR
6/4.8 OZ - 06402
- PUFFZELS-WILD BUFFALO
6/4.8 OZ - 06403
- PUFFZELS-HONEY MUSTARD
6/4.8 OZ - 06404
- ORIGINAL 10 OZ PRETZEL SHELLS
12/10 OZ - 10211
- UNSALTED 11 OZ PRETZEL SPLITS
12/11 OZ - 11010U
- ORIGINAL 11 OZ PRETZEL SPLITS
12/11 OZ - 110116
- EXTRA SALT PRETZEL SPLITS - 11 OZ
12/11 OZ - 110123
- EXTRA DARK 11 OZ PRETZEL SPLITS
12/11 OZ - 11021
- MULTIGRAIN 11 OZ PRETZEL SPLITS
12/11 OZ - 110413
- SOURDOUGH CRAFT BEER PRETZEL RINGS
12/11 OZ - 13117



BETTER SEAFOOD STARTS WITH BETTER SOURCING.



MSC P&L ALBACORE TUNA NOSALT 5OZ	12/5 OZ	30252
MSC P&L SKIPJACK TUNA 2X2.8OZ	12/5.6 OZ	30320
MSC SARDINES EXTRA VIRGIN OLIVE OIL	12/4.2 OZ	30382
MSC SARDINES IN SPICY TOMATO SAUCE	12/4.2 OZ	30399
MSC JACK MACKEREL FILLETS	12/4.4 OZ	30405
MSC ANCHOVY FILLETS IN EVOO	12/1.6 OZ	30412
MSC SARDINES EVOO W/CHILI	12/4.2 OZ	31266
MSC P&L ALBACORE TUNA OLIVE OIL 5OZ	12/5 OZ	31662
MSC P&L SKIPJACK TUNA NOSALT 5OZ	12/5 OZ	530221
MSC P&L SKIPJACK TUNA OLIVE OIL 5OZ	12/5 OZ	530245
TUNA, YELLOWFIN POUCH POLE/LINE	6/43 OZ	53265



MACARONS

FRUIT MEDLEY MACARONS (6CT)	15/6 PK	MAC201
DOLCE TRIO MACARON (6CT)	15/6 PK	MAC202

BULK - SCOOP CAKES

TIRAMISU SCOOP CAKE	6/33 OZ	RCS210
MIXED BERRY CHANTILLY SCOOP CAKE	6/35 OZ	RCS234
CARROT SCOOP CAKE	6/28.5 OZ	RCS340

EAT LOCAL

TASTES OF THE GREAT LAKES

INDIVIDUAL PORTIONS

TIRAMISU LEMON MASCARPONE	15/2.9 OZ	RCS102
TIRAMISU STRAWBERRY CRUNCH	15/3.2 OZ	RCS103
TIRAMISU ITALIAN ALMOND	15/3.8 OZ	RCS104
BROWNIE MOCHA FUDGE	15/3.3 OZ	RCS106
CHEESECAKE STRAWBERRY SWIRL	15/4 OZ	RCS108
CHEESECAKE TURTLE	15/4.6 OZ	RCS109
CHEESECAKE NEW YORK TRADITIONAL	15/4 OZ	RCS110
CARROT RETAIL SLICE	15/4.2 OZ	RCS357
DUBAI BROWNIE SLICE	15/3.35 OZ	RCS112



DUBAI BROWNIE





A' SICILIANA®

A'SICILIANA

A'SICILIANA LIMONATA SODA CAN 4PK
6/4 PK - 02077S

A'SICILIANA BLOOD ORANGE SODA CAN 4PK
6/4 PK - 02079

A'SICILIANA MANDARIN SODA CAN 4PK
6/4 PK - 02147

A'SICILIANA POMEGRANATE SODA CAN 4PK
6/4 PK - 02151



BEVERAGES



BEA'S SQUEEZE

BASIL LEMONADE

12/12 OZ - 56214

PINK ROSE LEMONADE

12/12 OZ - 59621

LAVENDER LEMONADE

12/12 OZ - 596383

24/12 OZ - 59614

CLASSIC LEMONADE

12/12 OZ - 59645

24/12 OZ - 21484

HIBISCUS LEMONADE

12/12 OZ - 59652

24/12 OZ - 59669



LEELANAU ORIGINAL

CHERRY SWEET ICED TEA

12/12/1.5 OZ - 85551

CHERRY UNSWEET ICED TEA

12/12/1.5 OZ - 85552

CHERRY LEMONADE

12/12/1.5 OZ - 85554

CHERRY HALF & HALF

12/12/1.5 OZ - 85556

CHERRY LIMEADE

12/12/1.5 OZ - 85554

LEELANAU SPARKLING

ORIGINAL CHERRY SPARKLING WATER

12/12 OZ - 68080

CHERRY LEMONADE SPARKLING WATER

12/12 OZ - 68077

CHERRY LIMEADE SPARKLING WATER

12/12 OZ - 68084



BOYLAN

GRAPE BOYLAN 24/12 OZ PACK

24/12 OZ - 07101

CREME BOYLAN 4 PACK

24/12 OZ - 08100

ROOT BEER BOYLAN SODA 4 PACK

24/12 OZ - 625735

GINGER ALE BOYLAN SODA 4 PACK

24/12 OZ - 635739

CANE COLA 4 PACK

24/12 OZ - 625740

BOYLAN ORANGE SODA 4 PACK

24/12 OZ - 625741

SHIRLEY TEMPLE BOYLAN 4 PACK

24/12 OZ - 70905

DIET CANE COLA 24/12 OZ

24/12 OZ - 732007

JOE TEA



JOE TEA

STRAWBERRY LEMONADE 12/20 OZ - 0002401

LEMON TEA 12/20 OZ - 000285

RASPBERRY TEA 12/20 OZ - 000322

GINSENG GREEN TEA 12/20 OZ - 000346

HALF & HALF 12/20 OZ - 000414

LEMONADE 12/20 OZ - 000629

PEACH TEA 12/20 OZ - 000681

BLACK TEA UNSWEETENED 12/20 OZ - 001749

SWEET TEA 12/20 OZ - 002180

MANGO LEMONADE 12/20 OZ - 002364

PINK LEMONADE 12/20 OZ - 4002012

DIET HALF & HALF 12/20 OZ - 02456

BLCK CHERRY LEMONADE 12/20 OZ - 03859

WATERMELON LEMONADE 12/20 OZ - 03880

KIWI STRWBRY LEMONADE 12/20 OZ - 03897



HARNEY & SONS

ORG FAIR TRADE BLACK SWEET TEA

12/16 OZ - 11020

BUTTERFLY FLOWER LEMONADE

12/16 OZ - 110022H

TROPICAL GREEN + PLANT FIBER

12/16 OZ - 11026

COCONUT WATER

12/16 OZ - 13578

ORG BLACK CURRANT

12/16 OZ - 70023H

ORGANIC PEACH

12/16 OZ - 70024

ORG GREEN W/ CITRUS

12/16 OZ - 70026

ORG APPLE

12/16 OZ - 70030

ORG LEMONADE & TEA

12/16 OZ - 70032H

ORG ORANGE MANGO

12/16 OZ - 70033

ORGANIC CRANBERRY

12/16 OZ - 70034H

ORG UNSWEETENED BLACK TEA

12/16 OZ - 70052

ORG UNSWEETENED SUPREME GREEN

12/16 OZ - 70053H

ORG LEMONADE

12/16 OZ - 70100

CAN PEACH BLACK TEA

12/12 OZ - 3638

CAN BLACK TEA

12/12 OZ - 3669

CAN ORANGE MANGO JUICE

12/12 OZ - 3673

CAN WATERMELON MINT GREEN TEA

12/12 OZ - 3680

CHOCOLATE COCONUT WATER

12/10.8 OZ - 3713



CHERRY BAY
TART MONTMORENCY CHERRY
CONCENTRATE
 6/32 OZ - 01005



CIPRIANI
BELLINI, ZERO
 6/750 ML - 00838
TONIC WATER, MEDITERRANEAN ELOISE
 6X4/200 ML - 30353
BELLINI, ALCOHOL FREE
 6X4/180 ML - 76086
TONIC WATER, INDIAN HARRY'S
 6X4/200 ML - 80254



MCCLURES PICKLE
MILD BLOODY MARY MIX 16 OZ
 6/16 OZ - 78325
BLOODY MARY MIX - 1 GAL JUG
 4/1 GAL - 00114MCC



POM WONDERFUL
ELDERBERRY BOOST TEA
 6/12 OZ - 91011
ORANGE BLOSSOM WHITE TEA
 6/12 OZ - 91012
PEACH PASSION WHITE TEA
 6/12 OZ - 62312
HONEY GREEN TEA
 6/12 OZ - 62612
LEMONADE TEA
 6/12 OZ - 61912



RAIN WATER
WATER PURE SPRING - 16 OZ ALUMINUM
 24/16 OZ - 2069333



VELLAMO WATER
WATER, MINERAL STILL
 12/750 ML - PLO0055
WATER, MINERAL SPARKLING
 12/750 ML - PLO0057
WATER, SPRING STILL
 20/330 ML - SBX0018
 12/750 ML - SBX0024
WATER, SPRING SPARKLING
 20/330 ML - SBX0021
 12/750 ML - SBX0027



VIVIOS
BLOODY MARY MIX
 12/32 OZ - 00222VIV



La COLOMBE
 COFFEE ROASTERS

TRIPLE DRAFT LATTE
 12/11 OZ - 00488L
MOCHA DRAFT LATTE
 12/11 OZ - 00489L
VANILLA DRAFT LATTE
 12/11 OZ - 00490L
CARAMEL DRAFT LATTE
 12/11 OZ - 00491L
OATMILK DRAFT LATTE
 12/11 OZ - 00520L
DOUBLE DRAFT LATTE
 12/11 OZ - 00530L
OATMILK DOUBLE DRAFT LATTE
 12/11 OZ - 00532L
COLD BREW BRAZILIAN
 12/11 OZ - 00534L
COLOMIAN LIGHT ROAST BREW
 6/42 OZ - 02139
MEDIUM LIGHT BRAZILIAN COLD BREW
 6/42 OZ - 02146



VYBES



VYBES

PEACH GINGER WITH MAGNESIUM
12/12 OZ - 23314

BLUEBERRY MINT W/MAGNESIUM
12/12 OZ - 23307V

STRAWBERRY LAVENDER W/ MAGNESIUM
12/12 OZ - 23321

BLOOD ORANGE LIME W/ MAGNESIUM
12/12 OZ - 23284

SPADE



SPADE

YUZU LIME
12/12 OZ - 09035

COLA
12/12 OZ - 09312

BLUEBERRY ACAI
12/12 OZ - 09329

DR. SPADE
12/12 OZ - 09336

GUAVA
12/12 OZ - 09343

KIWI STRAWBERRY
12/12 OZ - 09350



BEACH TIME LEMONADE

BLUE RASPBERRY LEMONADE - 12 PACK
12/16 OZ - 61039

CLASSIC LEMONADE - 12 PACK
12/16 OZ - 61046

PEACH LEMONADE - 12 PACK
12/16 OZ - 61060B

STRAWBERRY LEMONADE - 12 PACK
12/16 OZ - 61053

SAN BENEDETTO



SAN BENEDETTO

PEACH TEA 1/2 LITER
12/17 OZ - 01211

LEMON TEA 1/2 LITER
12/17 OZ - 01211

SAN BENEDETTO WATER (GLASS) 34 OZ
12/34 OZ - 01271

SAN BENEDETTO SPARKLING 34 OZ
12/34 OZ - 01295

SAN BENEDETTO WATER 17 OZ
20/17 OZ - 01325

SAN BENEDETTO SPARKLING 17 OZ
20/17 OZ - 01332

SAN BENEDETTO SPARKLING 25 OZ
12/25 OZ - 04074

SAN BENEDETTO SPARKLING 8 OZ
24/8 OZ - 04265

500 ML NATURAL PINK LABEL (PLASTIC)
4/6 PK - 05401

NGUYEN

COFFEE SUPPLY



NGUYEN

VIETNAMESE COFFEE SUPPLY CONDENSED
12/7.5 OZ - 42095

VIETNAMESE COFFEE CLASSIC BLACK
12/7.5 OZ - 442071

VIETNAMESE COFFEE SUPPLY COCONUT
12/7.5 OZ - 442118



SAN PELLEGRINO

SAN PELLEGRINO WATER
12/34 OZ - 80000
24/17 OZ - 80003
15/25 OZ - 80012SAN
4/6PK/8 OZ - 80035

ACQUA PANNA

ACQUANA PANNA
12/34 OZ - 60030
24/17 OZ - 92262
4/6PK/8 OZ - 60005
12/25 OZ - 63448



A new line of flavored sparkling waters featuring real fruit juice, a hint of Sicilian salt, zero added sugar, and low calories (10 or less per can), inspired by Italian tradition.

CIAO LIME
4/6 PK - 15184

CIAO CHERRY
4/6 PK - 45386

CIAO BLOOD ORANGE
4/6 PK - 75554

CIAO PEACH
4/6 PK - 85947



Q DRINKS

- Q TONIC WATER 6 PACK
4/6.7 OZ - 43031
- Q GINGER BEER 6 PACK
4/6.7 OZ - 43032
- Q GINGER ALE 6 PACK
4/6.7 OZ - 43033
- Q CLUB SODA 6 PACK
4/6.7 OZ - 43034Q
- Q GRAPEFRUIT 6 PACK
4/6.7 OZ - 43035



Q DRINKS

- Q TONIC WATER 7.5 OZ CAN 4 PACK
6/4 PACK - 003798
- Q GINGER BEER 7.5 OZ CAN 4 PACK
6/4 PACK - 003804
- Q GINGER ALE 7.5 OZ CAN 4 PACK
6/4 PACK - 003811
- Q CLUB SODA 7.5 OZ CAN 4 PACK
6/4 PACK - 003828
- Q GRAPEFRUIT 7.5 OZ CAN 4 PACK
6/4 PACK - 003835
- Q LIGHT TONIC 7.5 OZ CAN 4 PK
6/4 PACK - 00825
- Q LIGHT GINGER BEER 7.5 OZ CAN 4 PK
6/4 PACK - 008336
- Q HIBISCUS GINGER BEER 7.5 OZ CAN 4
6/4 PACK - 008534



Q MIXERS

- Q BLOODY MARY 32 OZ BOTTLE
12/32 OZ - 008732
- Q MARGARITA 32 OZ
12/32 OZ - 008729
- Q BLOODY MARY 7.5 OZ CAN 4 PK
6/4 PACK - 00894
- Q MARGARITA 7.5 OZ CAN 4 PK
6/4 PACK - 00896
- SPICY GRAPEFRUIT MARG 4PK CAN
6/4 PACK - 43009
- SPICY MANGO MARG 4PK 7.5OZ
6/4 PACK - 43012



- GUERNSEY
LEMONADE PINT
20/1 PT - 004158
6/1/2 GAL - 004144
CHOCOLATE MILK PINTS
20/1 PT - 001096

- OHY WATER
- LEMON LIME SPARKLING WATER
3/8 PK - 3767019
- CHERRY LIME SPARKLING WATER
3/8 PK - 3767071
- STRAWBERRY LEMON SPARKLING WATER
3/8 PK - 3767095
- RASPB LEMON SPARKLING WATER
3/8 PK - 3767132
- PINEAPPLE SPARKLING WATER 8PK
3/8 PK - 3767255
- BLACKBERRY SPARKLING WATER 8PK
3/8 PK - 3767293



BRIETTE

- CREAMY & BLUE 10/4.4OZ - 14976
- CREAMY & BUTTERY RED 10/4.4OZ - 14986
- CREAMY & MILD 10/4.4OZ - 14996
- SMOKY 10/4.4OZ - 15176
- DULCE DE LECHE 10/4.4OZ - 15186



CHEESE



- CHARLEVOIX CHEESE**
PEPPER JACK CHEESE
 12/8 OZ - 42019
CHEDDAR CHEESE MILD
 12/8 OZ - 42057
MONTEREY JACK CHEESE
 12/8 OZ - 42064
CHEDDAR CHEESE ONION & CHIVE
 12/8 OZ - 42118
CHEDDAR CHEESE ROASTED GARLIC
 12/8 OZ - 42187
CHEESE CURDS CHEDDAR
 12/8 OZ - 42002
CHEESE CURDS ROASTED GARLIC
 12/8 OZ - 42040
CHEESE CURDS BUFFALO RANCH
 12/8 OZ - 42071
CHEESE CURDS SRIRACHA
 12/8 OZ - 642008



- QUARK CHEESE**
 12/8 OZ - 42026
QUARK CHEESE MAPLE
 12/8 OZ - 42033
QUARK CHEESE HOT HONEY
 12/8 OZ - 42101



- BEEMSTER**
VLASKAAS 12/5.3 OZ - 730977
AGED (18 MONTHS) 12/5.3 OZ - 730978
GOAT (4 MONTH) 12/5.3 OZ - 733170



- CELLO**
EVERYDAY BOARD SM GOUDA, CHED, DIJO
 14/10 OZ - 419440
FONTAL WEDGE TUSCAN RUBBED
 6/5 OZ - 421808
FONTAL WEDGE DIJON AND HERB RUBBED
 6/5 OZ - 421839
FONTAL WEDGE CREAMY DILL RUBBED
 6/5 OZ - 421877
FONTAL WEDGE MAYAN COFFEE & COCOA
 6/5 OZ - 421882

CARMELA



- MOZZARELLA LOG 26 SLICES VAC**
 6/1 LB - 10910C



- MASCARPONE DIP PARM BASIL**
 12/6 OZ - 530050
MASCARPONE DIP GARLIC HERB
 12/6 OZ - 530051
MASCARPONE DIP WHIPPED FETA
 12/6 OZ - 530052



- DODONI**
HALLOUMI EW 10/7.9 OZ - 0705
DODONI FETA IN BRINE 16/200 GM - 1193



- DI BRUNO BROS**
CHEESE SPREAD PORT WINE
 6/7.6 OZ - 03708
CHEESE SPREAD ABBRUZZE
 6/7.6 OZ - 03715
CHEESE SPREAD CHEDDAR HRSRDSH BCON
 6/7.6 OZ - 03722
CHEESE SPREAD GORGONZOLA
 6/7.6 OZ - 03739
CHEESE SPREAD PROVOLONE & CHIANTI
 6/7.6 OZ - 03746
CHEESE SPREAD ROASTED GARLIC & HERB
 6/7.6 OZ - 03753
CHEESE SPREAD SMOKED GOUDA & BEER
 6/7.6 OZ - 05634
CHEESE SPREAD PINOT GRIGIO & FIG
 6/7.6 OZ - 05641



- DOUBLE CRÈME**
BRIE DOUBLE CRÈME RETAIL
 6/8 OZ - 2863
BRIE DOUBLE CRÈME RETAIL
 11/5 OZ - 8565
CAMEMBERT DOUBLE CRÈME RETAIL
 6/8 OZ - 2900
- FLAVORED & SPECIALTY**
DOUBLE CRÈME BRIE WITH PEPPERCORN
 6/8 OZ - 2580
DOUBLE CRÈME BRIE WITH HERB & GARLIC
 6/8 OZ - 2924
DOUBLE CRÈME SLICING RECTANGLE
 6/8 OZ - 4300

CARR VALLEY CHEESE

TIMELESS TRADITION,

UNMATCHED ARTISAN CRAFTSMANSHIP



BREAD CHEESE GARLIC EXACT WEIGHTS
12/6 OZ - 3084

CHEDDAR, 5 YEAR AGED
12/7 OZ - 3090

CHEESE STIX, SMOKED CHEDDAR
48/1 OZ - 1652

CHEESE STIX, GOAT CHEDDAR
48/1 OZ - 1655

CHEESE STIX, CRNBRY CHIPOTLE CHEDDA
48/1 OZ - 1658

CHEESE STIX, BREAD
48/1 OZ - 1661

HICKORY SMOKED CHEDDAR SPREAD
12/8 OZ - 1277

LATE HARVEST WINE SPREAD
12/8 OZ - 1283

SOUTHERN PIMENTO SPREAD (3206)
12/8 OZ - 1440

TOASTED ONION SPREAD
12/8 OZ - 1709

BREW MASTER PUB SPREAD
12/8 OZ - 2076

CHEDDAR APPLE SMOKED
12/5 OZ - 3003C

CHEDDAR, CRANBERRY CHIPOTLE
12/5 OZ - 3011

FONTINA SMOKED
12/5 OZ - 3018

PEPPER JACK SMOKED
12/7 OZ - 3026

FONTINA (COW) EXACT WEIGHTS
12/5 OZ - 3018

BREAD CHEESE EXACT WEIGHTS
12/6 OZ - 3082



CADY CREEK

COLBY SLICED DELI
12/8 OZ - 250105

GOLD N' JACK SLICED DELI
12/8 OZ - 250204

CHEDDAR SLICED DELI
250303 - 12/8 OZ

PEPPER JACK SLICED DELI
12/8 OZ - 250600

PROVOLONE SLICED DELI
12/8 OZ - 251201

SWISS SLICED DELI
12/8 OZ - 253205

GOUDA SMKD SLICED DELI
12/8 OZ - 269107



EAT LOCAL

CHEDDAR MEDIUM RETAIL (2 YR)
16/8 OZ - 610230

CHEDDAR SHARP RETAIL (3 YR)
16/8 OZ - 610254

CHEDDAR XTRA SHARP RETAIL (4 YEAR)
12/8.5 OZ - 610278

CHEDDAR PEPPERCORN RETAIL (6 MONTH)
12/8.5 OZ - 610292

TERRIFIC TRIO (CHED, PARM, GOUDA)
12/8.5 OZ - 610315

DELICIOUS DUO (CHEDDAR & GOUDA)
12/8.5 OZ - 610323



ST ROCCO

BRIE TRIPLE CRÈME RETAIL
6/8 OZ - 7865



CHEESE SPREAD CALABRESE W/FETA
12/8.5 OZ - 5425

CHEESE SPREAD CARAMELIZED ONION & THY
12/8.5 OZ - 5432

CHEESE SPREAD HOT HONEY & GOAT CHS
12/8.5 OZ - 5449

CHEESE SPREAD GREEN GODDESS RANCH
12/8.5 OZ - 5456



EIFFEL TOWER

BRIE 1 KG (EIFFEL TOWER)SEALED
1/1 KG - 060940



EL PASTOR

IBERICO IN OLIVE OIL WEDGE EW
6/5 OZ - 02112

WINE SOAKED GOAT CHEESE
6/150 GM - 2528



FRIENDSHIP

BRIE TINS
12/4.5 OZ - 293017



GRANDE CHEESE

PROVOLONE BOCCINI AGED
6/1.75LB - 00451

PROVOLONE BOCCINI AGED
1/1.75LB - 00451GRP



GUGGISBERG

SWISS BABY WEDGE 12/12 OZ - 05022
SWISS CHUNKS 12/12 OZ - 25311



IVY'S

CHEDDAR RESERVE VINTAGE
9/7 OZ - 1771

BUTTER SALTED
20/8 OZ - 10422

CHEDDAR RED RESERVE SOMERSET
9/7 OZ - 17198



KINGSTON CREAMERY

PREMIUM BLUE CHEESE WEDGE
12/4 OZ - 88116

GORGONZOLA WEDGE
12/4 OZ - 88117

SMOKED BLUE CHEESE WEDGE
12/4 OZ - 88416

GOAT BLUE CHEESE WEDGE
12/4 OZ - 88516

BREEZY BLUE CHEESE WEDGE
12/4 OZ - 88716



KINGSTON CREAMERY

BLUE SALAD BLEND CRUMBLES CUP
12/4 OZ - 80904

PREMIUM BLUE CHEESE CRUMBLES CUP
12/4 OZ - 88114K

GORGONZOLA CRUMBLES CUP
12/4 OZ - 88115

SMOKED BLUE CHEESE CRUMBLES CUP
12/4 OZ - 88414

GOAT BLUE CHEESE CRUMBLES CUP
12/4 OZ - 88514

BREEZY BLUE CHEESE CRUMBLES CUP
12/4 OZ - 88714



LACLARE

GOAT CHEDDAR
12/4 OZ - 0302

GOAT FETA
12/6 OZ - 0702

GOAT CHEESE ORIGINAL LOG
12/4 OZ - 0810

GOAT CHEESE GARLIC & HERB LOG
12/4 OZ - 0830

GOAT CHEESE EVERYTHING LOG
12/4 OZ - 0834

GOAT CHEESE BLUEBERRY VANILLA LOG
12/4 OZ - 0840L

GOAT CHEESE HONEY LOG
12/4 OZ - 0851

GOAT CHEESE ORIGINAL F/S
6/10.5 OZ - 0897



IDYLL FARMS

FENNEL POLLEN IDYLL PASTURES GOAT
8/4 OZ - 875

HONEY LAVENDER IDYLL PASTURES GOAT
8/4 OZ - 880

HONEY LAVENDER SPREADABLE IDYL GOAT
8/5 OZ - 885

GARLIC HERB SPREADABLE IDYLL GOAT
8/5 OZ - 890

GARLIC HERB IDYLL PASTURES GOAT
8/4 OZ - 860

PLAIN IDYLL PASTURES GOAT
8/4 OZ - 870

CHILI BILLY GOAT CHEESE
8/5 OZ - 838

PLAIN SPREADABLE IDYLL PASTURE GOAT
8/5 OZ - 840



JACQUIN

GOAT FRENCH CHEVRE RED ROSE PETAL
10/3.5 OZ - 9257



LEELANAU CHEESE
TRADITIONAL RACLETTE WEDGES
8/8 OZ - 400123

Old Amsterdam



OLD AMSTERDAM
GOUDA 4 MONTH WEDGE
12/6.25 OZ - 300796
GOUDA CLASSIC 8 MONTH WEDGE
12/6 OZ - 300474
GOUDA GOAT 8 MONTH WEDGE
12/5.29 OZ - 300539
GOUDA RESERVE 18 MONTH WEDGE
12/5.46 OZ - 300747
GOUDA BITES CLASSIC 8 MONTH
14/3.17 OZ - 300373



LAITA
BRIE FRENCH DBL CRM NO LABEL
31000 - 6/8 OZ



FROMAGERIE FAMILIALE DEPUIS 1895



LINCET
BRIE DELICE DE BOURGNE MINI
6/7 OZ - 1174



CHEDDAR PEPPER
12/8 OZ - 00001F
CHEDDAR NATURAL SMOKED
12/8 OZ - 0024F
CHEDDAR WHITE MEDIUM
12/8 OZ - 00100F
CHEDDAR SHARP WHITE
12/8 OZ - 0021F
CHEDDAR XTRA SHARP WHITE
12/8 OZ - 0031F
CHEDDAR YELLOW MEDIUM
12/8 OZ - 00120F
CHEDDAR SHARP YELLOW
12/8 OZ - 0023F
CHEDDAR XTRA SHARP YELLOW
12/8 OZ - 0033F



HANDCRAFTED WITH COW'S MILK,
FROM OUR MICHIGAN FAMILY FARM

Ingredients: Pasteurized milk,
cheese culture, salt, enzymes and
annatto color. Contains: Milk

JACK MONTEREY JACK
12/8 OZ - 00430F
JACK TRUFFLE MICHIGAN MADE
12/8 OZ - 0004F
JACK HABANERO MICHIGAN MADE
12/8 OZ - 0047F
JACK HORSERADISH MICHIGAN
12/8 OZ - 00490F
JACK SMOKEY MICHIGAN
12/8 OZ - 0053F
JACK HOT PEPPER MICHIGAN
12/8 OZ - 0057F
JACK OLIVE MICHIGAN
12/8 OZ - 00610F
JACK DILL MICHIGAN
12/8 OZ - 0069F
JACK CALABRESE
12/8 OZ - 0083F
JACK ONION & GARLIC
12/8 OZ - 0051F
TOMATO & BASIL
12/8 OZ - 0101F
MOREL & LEEK
12/8 OZ - 7007
COLBY MICHIGAN MADE
12/8 OZ - 00410F
COLBY-JACK, MARBLE
12/8 OZ - 0045F



LIUZZI CHEESE - FLOR DI LATTE/MOZZARELLA
 FIOR DI LATTE HAND WRAPPED
 15/16 OZ - 1001005
 16/8 OZ - 100198
 MOZZARELLA DI BUFALA 4 OZ - 2 PER
 6/8 OZ - 1001030



LIUZZI CHEESE - RICOTTA
 RICOTTA HAND DIPPED
 8/1.5 OZ - 001169
 RICOTTA OLD FASHIONED WHOLE MILK
 12/1 LB - 001374
 RICOTTA DI BUFALA
 6/8 OZ - 1001026
 OLD FASHIONED RICOTTA
 12/15 OZ - 100137



LIUZZI CHEESE - SMOKED
 SMOKED FIOR DI LATTE HAND WRAPPED
 16/8 OZ - 1001003
 9/15 OZ - 1001045



LIUZZI CHEESE
 BURRATA 2 OZ DOMESTIC
 6/2/4 OZ- 11677
 BURRATA 4 OZ DOMESTIC
 6/2/4 OZ- 0013167
 CACIOCAVALLO 1.5 LB VACK PACK
 6/1.5 LB - 010922
 CACIOCAVALLO SPLIT VACUUM PACK
 12/10 OZ - 1001069
 MASCARPONE
 6/1 LB - 1001059
 SCAMORZA SPLIT VACUUM PACKED
 12/8 OZ - 001275
 STRACCIATELLA 1LB
 6/1 LB - 00189



LIUZZI CHEESE - BITES
 SALAMI & MOZZ CHARCUTERIE BITE
 9/4 OZ - 1001036
 PROSCIUTTO & MOZZ CHARCUTERIE BITE
 9/4 OZ - 1001044
 SOPPRESSATA & MOZZ CHARCUTERIE BITE
 9/4 OZ - 1001047
 PEPPERONI & MOZZ CHARCUTERIE BITE
 9/4 OZ - 1001048





POINT REYES

ORG BLUE 6 OZ WEDGE
16/6 OZ - 21100PR

TOMA WEDGES 6 OZ
12/6 OZ - 53115

TOMA TRUFFLE WEDGES 6 OZ
12/6 OZ - 55115

BLUE, BAY BLUE WEDGES 5 OZ
8/5 OZ - 61114

QUINTA
8/5 OZ - 91005



WILD MOREL AND JACK LEEK
12/6 OZ - 00272

BRUSCHETTA JACK
12/6 OZ - 002746

GARLIC PESTO JACK
12/6 OZ - 00276

SWEET FIRE MANGO JACK
12/6 OZ - 002821

BANANA PEPPER JACK
12/6 OZ - 002869

MUSCODA MAYHEM COLBY JACK
12/6 OZ - 002883



ROTH

CREAMY GOUDA SNACKS
12/4.5 OZ - 56720

CREAMY CHEDDAR SNACKS
12/4.5 OZ - 56725



SINCERELY BRIGITTE

VARIETY TRY - SLICED RETAIL
1300 - 6/12 OZ

CHEDDAR & BLUE MARBLED RETAIL
SB1206 - 12/7 OZ

JACK MONT OLIVE & SUNDRD TOM RETAIL
SB1207 - 12/7 OZ

JACK MONT W/ JALAP & CILANTRO RETAIL
SB1209 - 12/7 OZ

JACK MONT W/GARLIC & BASIL RETAIL
SB1208 - 12/7 OZ

JACK PRAIRIE PARSLEY & CHIVES RETAIL
SB1211 - 12/7 OZ



WOOD RIVER CREAMERY

CHEDDAR GRUYERE ORIGINAL
08136 - 12/8 OZ

CHEDDAR GRUYERE ROASTED REP PEPP
83110 - 12/8 OZ

CHEDDAR GRUYERE HEBES DE PROVENCE
83131 - 12/8 OZ

CHEDDAR GRUYERE BLACK TRUFFLE
83148 - 12/8 OZ

CHEDDAR GRUYERE MANGO HABANERO
83149 - 12/8 OZ

CHEDDAR GRUYERE CHIPOTLE GARLIC
83151 - 12/8 OZ

CHEDDAR GRUYERE SMK CRKD PEPPER
83192 - 12/8 OZ

CHEDDAR GRUYEREW/ TRIPLE PEPPER
83194 - 12/8 OZ



WYKE

CHED VINTAGE 15 MO 9/7 OZ - 40537
CHED MATURE 6 MO 9/7 OZ - 45840
CHED XTRA MATURE 12 MO 20/8 OZ - 64713
BUTTER SALTED 9/7 OZ - 73015



SNOWDONIA

LEICESTER RED 12/7 OZ -
VDERBY PORT WINE 12/7 OZ -
DERBY SAGE 8/7 OZ -
CHEDDAR AGED WELSH 8/7 OZ -
12/7 OZ -



ZINGERMAN'S

PIMENTO CHEESE 6/8 OZ - 06180Z
FARM CHEESE 6/6 OZ - 07323
MINI BRIE COW 6/4 OZ - 09013
CERVELLE DE CANUT 6/6 OZ - 09457
MINI BRIE GOAT 6/4 OZ - 09617
LIPTAUER CHEESE 6/6 OZ - 09618
CREAM CHS GRCL & HERB 6/6 OZ - 09619



FAMILY CURED & CRAFTED SINCE
1902
Volpi

VOLPI

ROLTINI SINGLE PROSCIUTTO
12/12/1.5 OZ - 85551

ROLTINI SINGLE SPICY SALAME
12/12/1.5 OZ - 85552

ROLTINI SINGLE PEPPERONI
12/12/1.5 OZ - 85554

ROLTINI SINGLE PJACK & GENOA
12/12/1.5 OZ - 85556



CHARCUTERIE



LE STELLE

MOZZARELLA / HARD SALAMI SNACK STICK
2/12/1.5OZ - 14100

MOZZARELLA / PEPPERONI SNACK STICK
2/12/1.5OZ - 14800

MOZZARELLA / PROSCIUTTO SNACK STICK
2/12/1.5OZ - 14900



LEVONI

SLICED PROSCIUTTO ITALIANO
4006 - 10/2 OZ

SLICED SALAME MILANO
4007 - 10/2 OZ

SLICED SALAME SPIANATA PICCANTE
4008 - 10/2 OZ

SLICED SALAME NAPOLI
4009L - 10/2 OZ

SLICED SALAME FENNEL SEED
4010L - 10/2 OZ

SLICED COPPA DRY CURED
4011L - 10/2 OZ

SLICED MORTADELLA
4013L - 8/3 OZ



PIEDMONTESE

BEEF SNACK STICK ORIGINAL 1 OZ
4/24 CT - 2282114

BEEF SNACK STICK JALAPENO 1 OZ
4/24 CT - 2282124

BEEF JERKY HICKORY 3 OZ
12/3 OZ - 2691134

BEEF JERKY BOLD & SPICY 3 OZ
12/3 OZ - 2691144



LEONCINI

MORTADELLA PLAIN IMPORTED 1 LB
12/1 LB - 31070
1/1 LB - 31070P



LEVONI

PROSCIUTTO SNACK 2 OZ
4014L - 8/2 OZ

NAPOLI SNACK 2 OZ
4015L - 8/2 OZ

CALABRESE SNACK 2 OZ
4016L - 8/2 OZ

GRASS FINISHED
ORIGINAL SNACK STICKS

HEALTHY
SNACKING

PROTEIN
PACKED

RAISED IN THE
MIDWEST

PERFECT FOR
ON-THE-GO



MAESTRI
Charcuterie Masters



MAESTRI

ANTIPASTO PANINO PROSCIUTTO & PROV
10/4 OZ – SNS010

ANTIPASTO RUSTICO SALAMI & SPINATA
10/4 OZ – SNS011

ANTIPASTO CLASSICO PROSC,COPPA,SALA
10/4 OZ – SNS012

TAPAS DE ESPANA SLICED LARGE TRAY
10/4 OZ – SNS017

MAESTRI
Charcuterie Masters



HORIZO PRE SLICED
10/3 OZ – CBS001

JAMON SERRANO PRE SLICED
10/3 OZ – JSS001

PROSCIUTTO ITALIANO PRE SLICED
10/3 OZ – PRS001

PROSCIUTTO ITALIANO SLICED
5/16 OZ – PRS003

SALAME RUSTICO PRE SLICED (SAS001)
10/3 OZ – PRS004

HOT SPINATA CALABRESE SLICED
10/3 OZ – SAS006

COPPA ITALIANA PRE SLICED
10/3 OZ – SLS001

SPECK ITALIANO PRE SLICED
10/3 OZ – SPS001

MAESTRI
Charcuterie Masters



PROSCIUTTO STRIPS
10/3.5 OZ – PRD001

PANCETTA STRIPS
10/3.5 OZ – SLD001

GUANCIALE STRIPS
10/3.5 OZ – SLD004

SPECK STRIPS
10/3.5 OZ – SPD001

MAESTRI
Charcuterie Masters



SNACK SALAME & CHEESE CRISPS SOLO
10/1.5 OZ – SNS019

MAESTRI
MASTERFULLY CRAFTED™



SALAMI GENOA SLICED
10/3 OZ – SAS037

SALAMI SOPRESSATA SLICED
10/3 OZ – SAS038

SALAMI CALABRESE SLICED
10/3 OZ – SAS039

SALAMI FINOCCHIONA (FENNEL) SLICED
10/3 OZ – SAS053

ANTIPASTO TRAY 3 SALAMI / PROV
10/6 OZ – SNS031

ANTIPASTO TRAY SPICY COPPA CALAB
10/4 OZ – SNS034

ANTIPASTO TRAY GENOA SOPR CALAB
10/4 OZ – SNS035

Fresh Slice
MAESTRI



SPECK SLICED FRESH
8/2.3 OZ – CFS011

SERRANO SLICED FRESH
8/2.3 OZ – CFS015

BRESAOLA SLICED FRESH
8/2.3 OZ – CFS016

ANTIPASTO TRAY COLLECTION N1
6/6.5 OZ – SNS033

ANTIPASTO TRAY COLLECTION N2
6/6.5 OZ – SNS036

OLLI
SALUMERIA



OLLI

ANTIPASTO TRAY, CALABR/GENOA/ HARD/
56005 – 8/12 OZ

ANTIPASTO TRAY, CHED/JALAP OLV/GENO
56002 – 8/12 OZ

ANTIPASTO TRAY, PARM/GENOA/SOPRESS/
56001 – 8/12 OZ

ANTIPASTO TRAY, SALAMI,CHS CURD
56006 – 8/12 OZ

OLLI
SALUMERIA



SNACK TRAY, GENOA FONTINA CRACKER
332001 – 10/2 OZ

SNACK TRAY, SOPRESSATA CHEDDAR CRAC
334001 – 10/2 OZ

SNACK TRAY, CALABRESE ASIAGO CRACKE
333001 – 10/2 OZ

SNACK TRAY, PEPPERONI/MOZZ/ CRACKER
335001 – 10/2 OZ

SNACK TRAY, PROSCIUTTO, MOZZ & CRAC
339001 – 10/2 OZ



OLLI'

- SALAMI SLICED NAPOLI APPLEWOOD SMK
20/4 OZ - 50102
- SALAMI SLICED GENOA MILD
20/4 OZ - 50200
- SALAMI SLICED SOPRESSATA
20/4 OZ - 50401
- SALAMI SLICED TOSCANO FENNEL POLLEN
20/4 OZ - 50501
- SALAMI SLICED PEPPERONI
20/4 OZ - 50800



- SALAMI CHUB NAPOLI (APPLEWD SMKD)
77711 - 12/6 OZ
- SALAMI CHUB TOSCANO (FENNEL)
77755 - 12/6 OZ
- SALAMI CHUB CALABRESE (SPICY W WINE)
77733 - 12/6 OZ
- SALAMI CHUB CHORIZO SMKD PAPRIKA
77777 - 12/6 OZ
- SALAMI CHUB NORCINO (GENOA)
77722 - 12/6 OZ
- SALAMI CHUB PEPPERONI (WINE & PAPRI)
77788 - 12/6 OZ
- SALAMI CHUB SOPRESSATA (PEPPER GARL)
777440 - 12/6 OZ
- SALAMI CHUB TARTUFO TRUFFLE
77799 - 12/5 OZ



OLLI'

- SALAMI CHUB SLICED GENOA 1.5 OZ
30200C - 30/1.5 OZ
- SALAMI CHUB SLICED SOPRESSATA 1.5
30400 - 30/1.5 OZ
- SALAMI CHUB SLICED CALABRESE 1.5 OZ
30300C - 30/1.5 OZ
- SALAMI CHUB SLICED PEPPERONI 1.5 OZ
30800 - 30/1.5 OZ



- SNACK TRAY PROVOLONE & PROSCIUTTO
8/2 OZ - 24002V
- SNCK CUP CHEDDAR & PEPPERONI NUGGET
8/2 OZ - 22389V
- SNCK CUP FONTINA & GENOA NUGGET
8/2 OZ - 22359V
- SNCK TRY MOZZ & GENOA SALAME
8/2 OZ - 224001

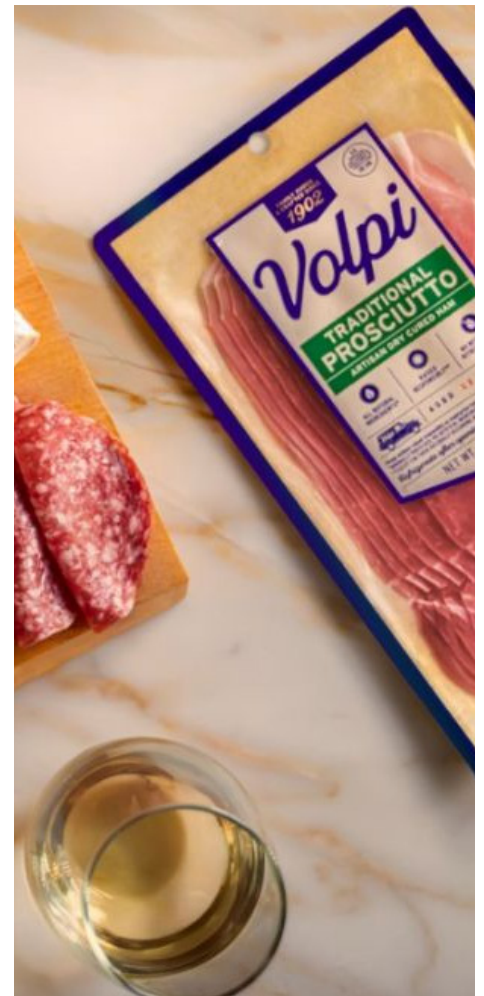


- TRIO: GENOA, COPPA, MORTADELLA
12/4 OZ - 16699
- TRIO: GENOA, COPPA, SOPRESSATA
126 OZ - 16998
- TRIO: SPICY COPA, SOPR, PEP SALAME
12/6 OZ - 16999V



VOLPI

- MORTADELLA SLICED
12/5.5 OZ - 15099V
- SOPSTA SALAME SLICED
12/4 OZ - 30153
- GENOA SALAME SLICED
12/4 OZ - 30551
- COPPA SLICED
12/3 OZ - 65099
- BRESAOLA SLICED
12/3 OZ - 71099
- PEPPERED SALAME SLICED
12/4 OZ - 73027
- PANCETTA SLICED
12/4 OZ - 81099
- PROSCIUTTO SLICED
12/3 OZ - 89955





esti®

ESTI

HUMMUS ORIGINAL W PITA CHIPS
12/4.6 OZ - 60094E

HUMMUS KALAMATA OLIVE W PIRA CHIPS
12/4.6 OZ - 60096E

TZATZIKI W PITA CHIPS
12/4.6 OZ - 60098E

HUMMUS LEMON W PITA CHIPS
12/4.6 OZ - 60099

EVERYTHING BAGEL W PITA CHIPS
12/4.6 OZ - 60157



ACCOMPANIMENT

DI BRUNO BROS.
CULINARY PIONEERS SINCE 1939



DI BRUNO BROS

BLOOD ORANGE & GRAPPA JAM
9320 - 6/3.9 OZ

FIG & ACACIA HONEY JAM
9330 - 6/3.9 OZ

STRAWBERRY & PROSECCO JAM
9340 - 6/3.9 OZ



DIVINA

RETAIL OLIVE FETA & GREEK OLIVE MIX
6/5.6 OZ - 14050

RETAIL OLIVE TANGERINE & CHILI
6/11.6 OZ - 14210

RETAIL OLIVE PITTED KALAMATA
6/4.9 OZ - 14220

RETAIL OLIVE PITTED GREEK MIX
6/4.9 OZ - 14240

RETAIL OLIVE MUFFULETTA SALAD
6/7.4 OZ - 14248

RETAIL OLIVE SICILIAN MARINATED
6/5.5 OZ - 14575

RETAIL OLIVE PITTED FRESCATRANO
6/4.9 OZ - 14970

RETAIL DOLMAS, STUFFED GRAPE LEAVES
6/10.9 OZ - 14065



SPREAD FIG 1 OZ
48/1.05 OZ - 82280

SPREAD SOUR CHERRY 1 OZ JAR
48/1.05 OZ - 82289

SPREAD CALABRN CHILI ORANG 1 OZ JAR
48/1.05 OZ - 82291

esti



ESTI

HUMMUS ORIGINAL RECIPE
8/10 OZ - 1006E

HUMMUS WITH PESTO
8/10 OZ - 1007E

HUMMUS WITH ROASTED PEPPER
8/10 OZ - 1008E

HUMMUS ROASTED GARLIC
8/10 OZ - 1009E

HUMMUS KALAMATA OLIVES
8/10 OZ - 1010E

HUMMUS LEMON
8/10 OZ - 1011

HUMMUS JALAPENO
8/10 OZ - 1030E

HUMMUS CARMELIZED ONION
8/10 OZ - 1032E

HUMMUS SPICY LOVE
8/8 OZ - 1056E



TZATZIKI
8/10 OZ - 1003E

SPREAD BABA GHANOUSH
8/10 OZ - 1004E

DIP, SPINACH & ARTICHOKE
8/10 OZ - 1031E



MASSEYFISH
PATE, SMOKED WHITEFISH
600 - 12/8 OZ
800 - 1/5 LB

PATE, SMOKED SALMON
601 - 12/8 OZ
801 - 1/5 LB

PATE, SMOKED LAKE TROUT
602 - 12/8 OZ
802 - 1/5 LB

PATE, MI CHERRY SMK WHITEFISH
10/8 OZ - 603

FRUTTO D'ITALIA



FRUTTO D'ITALIA

OLIVES GREEN PITTED, SNACK PCH
6-10/1 OZ - 050756



MCCLURES PICKLE

COLD PACK SWEET & SPICY SLICES
8/12 OZ - 7345

COLD PACK GARLIC & DILL CORNICHONS
8/12 OZ - 7346

COLD PACK GARLIC & DILL SLICES
8/12 OZ - 7433

COLD PACK SPICY DILL SLICES
8/12 OZ - 7434

COLD PACK CILANTRO
8/12 OZ - 78322



NATURAL NORTHERN

TRAVERSE CITY CHERRY & JALAPENO SPREAD
50709 - 12/7 OZ

ASIAGO & FETA CHEESE SPREAD
45067 - 12/7 OZ

ASIAGO & SPRING ONION
45302 - 12/8.5 OZ

PIMENTO CHEESE SPREAD
45364 - 12/7 OZ

CREAMY GARLIC ARTICHOKE SPREAD
50587 - 12/7 OZ

SUN-DRENCHED SMOKED TOMATO SPREAD
5066 - 12/7 OZ



MILL GLEN ARBOR

CRACKER SOURDOUGH EVERYTHING
12/8 OZ - 13133

CRACKER SOURDOUGH ZA'ATAR
12/8 OZ - 13737

CRACKER SOURDOUGH SPICY PIZZA
12/8 OZ - 13836

CRACKER SOURDOUGH SEA SALT
12/8 OZ - 13935



COUNTRY CLUB

esti



HUMMUS ORIGINAL W PITA CHIPS
12/4.6 OZ - 60094E

EVERYTHING BAGEL W PITA CHIPS
12/4.6 OZ - 60157

FRUTTO D'ITALIA



FRUTTO D'ITALIA

OLIVES GREEN PITTED, SNACK PCH
6-10/1 OZ - 050756

LE STELLE
SALUMI



LE STELLE

MOZZARELLA /HARD SALAMI SNACK STICK
2/12/1.5OZ - 14100

MOZZARELLA / PEPPERONI SNACK STICK
2/12/1.5OZ - 14800

MAESTRI
Charcuterie Masters



LE STELLE

SNACK SALAME & CHEESE CRISPS SOLO
10/1.5 OZ - SNS019

LEVONI
ORGOGGIOSAMENTE BUONI



LEVONI

PROSCIUTTO SNACK 2 OZ
4014L - 8/2 OZ

NAPOLI SNACK 2 OZ
4015L - 8/2 OZ

CALABRESE SNACK 2 OZ
4016L - 8/2 OZ

OLLI
SALUMERIA



OLLI

SNACK TRAY, SOPRESSATA CHEDDAR CRAC
334001 - 10/2 OZ

SNACK TRAY, CALABRESE ASIAGO CRACKER
333001 - 10/2 OZ

SNACK TRAY, PEPPERONI/MOZZ/ CRACKER
335001 - 10/2 OZ

Volpi



VOLPI

ROLTINI SINGLE SPICY SALAME
12/12/1.5 OZ - 85552

ROLTINI SINGLE PJACK & GENOA
12/12/1.5 OZ - 85556

Piedmontese
CERTIFIED
PIEDMONTESSE
BEEF



PIEDMONTESSE

BEEF SNACK STICK JALAPENO 1 OZ
4/24 CT - 2282124

BEEF JERKY BOLD & SPICY 3 OZ
12/3 OZ - 2691144

FERRIS
COFFEE & NUT CO



FERRIS

CRAFT BEER MIX CHDR JLPNO TO GO CUP
12/4 OZ - 64225

PEANUT BUTTER TRAIL MIX TO GO
12/5.5 OZ - 64226

GUMMI MINI NEON SOUR WORMS 12/5 OZ
12/5 OZ - 64223

JOE



SEA SALT POPCORN
24/0.9 OZ - 04108

SWEET & SALTY POPCORN
24/1.5 OZ - 04115

WHITE CHEDDAR POPCORN
24/1 OZ - 04122

CHEDDAR SNACK MIX
24/3.5 OZ - 04795

ORIGINAL SNACK MIX
24/3.5 OZ - 04801

A'SICILIANA



A'SICILIANA

A'SICILIANA MANDARIN SODA CAN 4PK
6/4 PK - 02147

A'SICILIANA POMEGRANATE SODA CAN 4PK
6/4 PK - 02151

La COLOMBE
COFFEE ROASTERS



TRIPLE DRAFT LATTE
12/11 OZ - 00488L

MOCHA DRAFT LATTE
12/11 OZ - 00489L

OATMILK DRAFT LATTE
12/11 OZ - 00520L

OATMILK DOUBLE DRAFT LATTE
12/11 OZ - 00532L



OHY WATER

LEMON LIME SPARKLING WATER
3/8 PK - 3767019

CHERRY LIME SPARKLING WATER
3/8 PK - 3767071

STRAWBERRY LEMON SPARKLING WATER
3/8 PK - 3767095

RASPB LEMON SPARKLING WATER
3/8 PK - 3767132



GUERNSEY

LEMONADE PINT
20/1 PT - 004158

CHOCOLATE MILK PINTS
20/1 PT - 001096



POM WONDERFUL

PEACH PASSION WHITE TEA
6/12 OZ - 62312

HONEY GREEN TEA
6/12 OZ - 62612

LEMONADE TEA
6/12 OZ - 62912



SPADE

YUZU LIME
12/12 OZ - 09035

COLA
12/12 OZ - 09312

DR. SPADE
12/12 OZ - 09336

KIWI STRAWBERRY
12/12 OZ - 09350



Q DRINKS

Q TONIC WATER 7.5 OZ CAN 4 PACK
6/4 PACK - 003798

Q GINGER BEER 7.5 OZ CAN 4 PACK
6/4 PACK - 003804

Q GINGER ALE 7.5 OZ CAN 4 PACK
6/4 PACK - 003811

Q CLUB SODA 7.5 OZ CAN 4 PACK
6/4 PACK - 003828

Q GRAPEFRUIT 7.5 OZ CAN 4 PACK
6/4 PACK - 003835

Q LIGHT TONIC 7.5 OZ CAN 4 PK
6/4 PACK - 00825

Q LIGHT GINGER BEER 7.5 OZ CAN 4 PK
6/4 PACK - 008336

Q HIBISCUS GINGER BEER 7.5 OZ CAN 4
6/4 PACK - 008534

Q BLOODY MARY 7.5 OZ CAN 4 PK
6/4 PACK - 00894

Q MARGARITA 7.5 OZ CAN 4 PK
6/4 PACK - 00896

SPICY GRAPEFRUIT MARG 4PK CAN
6/4 PACK - 43009

SPICY MANGO MARG 4PK 7.5OZ
6/4 PACK - 43012

FUNCTION MEETS FLAVOR

Modern hydration drinks with dietary sources of antioxidants from vitamins C, A and E.



CUCUMBER WATERMELON
12/18 OZ - 0461R

MANGO CLEMENTINE
12/18 OZ - 0462R

GEORGIA PEACH
12/18 OZ - 6621R

DRAGON FRUIT PUNCH
12/18 OZ - 6635R

BLACKBERRY LEMONADE
12/18 OZ - 6640R

STRAWBERRY LEMONADE
12/18 OZ - 6642R



BEA'S SQUEEZE

LAVENDER LEMONADE
24/12 OZ - 59614

CLASSIC LEMONADE
24/12 OZ - 21484

HIBISCUS LEMONADE
24/12 OZ - 59669



LEELANAU SPARKLING

ORIGINAL CHERRY SPARKLING WATER
12/12 OZ - 68080

CHERRY LEMONADE SPARKLING WATER
12/12 OZ - 68077

CHERRY LIMEADE SPARKLING WATER
12/12 OZ - 68084



NGUYEN

VIETNAMESE COFFEE SUPPLY CONDENSED
12/7.5 OZ - 42095

VIETNAMESE COFFEE CLASSIC BLACK
12/7.5 OZ - 442071

VIETNAMESE COFFEE SUPPLY COCONUT
12/7.5 OZ - 442118



BAKERLY

CREPES CHOCOLATE FILLED 9/6 PK
9/6 PK - 00603BA



SAN PELLIGRINO

CIAO LIME
4/6 PK - 15184

CIAO CHERRY
4/6 PK - 45386

CIAO BLOOD ORANGE
4/6 PK - 75554

CIAO PEACH
4/6 PK - 85947



BOB'S RED BARS

PEANUT BUTTER & JELLY OAT BAR
12/1.76 OZ - 00902

PEANUT BUTTER & BANANA OAT BAR
12/1.76 OZ - 08902



FEEL

BROWNIE BATTER MINI BAGS
12/1.2 OZ - 50601F

COOKIE DOUGH MINI BARS
12/1.2 OZ - 50649



ARANCIATA SLEEK CAN
4/6PK - 23578

LIMONATA- SLEEK CAN
4/6PK - 45317

ORANGE POMEGRANATE SLEEK CAN
4/6PK - 59376

ZERO BLOOD ORANGE 6PK 330ML
4/6PK - 64233

ZERO POM ORANGE 6PK 330ML
4/6PK - 81474

ZERO PEACH CLEMENTINE 6PK 330ML
4/6PK - 83604

ZERO LEMONADE 6PK 330ML
4/6PK - 96713



GREAT LAKES CHIP

CHERRY BBQ POTATO CHIPS 1.375 OZ
40/1.375 OZ - GL404

PARMESAN RANCH POTATO CHIPS 1.375OZ
40/1.375 OZ - GL504

WISCONSIN CHEDDAR 1.375 OZ
40/1.375 OZ - GL836



HARIBO

DINOSAURS
12/5 OZ - 34120

MINI RAINBOW FROG CANDY
12/5 OZ - 47277



KIND BARS

CRANBERRY ALOMND + ANTIOXIDANTS
12/1.4 OZ - 17211

PEANUT BUTTER DARK CHOC + PROTEIN
12/1.4 OZ - 17256

BLUEBERRY VANILLA & CASHEW
12/1.4 OZ - 18039



POP DADDY

GARLIC PARMESAN PRETZEL
12/7.5 OZ - S00518

CINNAMON SUGAR PRETZELS
12/7.5 OZ - S00581



POPZUP POPCORN

BUTTER ME UP POPCORN 2 OZ
18/2 OZ - 59308

CHEDDAR HEAD POPCORN 2 OZ
18/2 OZ - 59315



REKO

VANILLA SNACK PACK
12/0.6 OZ - 34146



RXBAR

BLUEBERRY PROTEIN BAR
12/1.83 OZ - 00419RX

CHOCOLATE SEA SALT PROTEIN BAR
12/1.83 OZ - 00423RX



THE GFB

CRANBERRY & TOASTED ALMOND GF BAR
12/2.05 OZ - 12152

PEANUT BUTTER GF BAR
12/2.05 OZ - 59855



THE GFB

GF DARK CHOCOLATE PB BITES 1.2 OZ
10/1.2 OZ - 8963G



MILL GLEN ARBOR

CRACKER SOURDOUGH EVERYTHING
12/8 OZ - 13133

CRACKER SOURDOUGH ZA'ATAR
12/8 OZ - 13737

CRACKER SOURDOUGH SPICY PIZZA
12/8 OZ - 13836

CRACKER SOURDOUGH SEA SALT
12/8 OZ - 13935



GRANDPAPA'S

NATURAL CHEESE PUFFS
16/3 OZ - 13928

NATURAL HOT PUFFS
16/3 OZ - 60520

WHITE CHEDDAR PUFFS
16/3 OZ - 60522

CHURRO PUFFS
16/3 OZ - 60524

NATURAL PIZZA
16/3 OZ - 60526



TOP SEEDZ

CRACKERS 6-SEED
12/5 OZ - 663083

CRACKERS ROSEMARY
12/5 OZ - 663090

CRACKERS SEA SALT
12/5 OZ - 663076

Bringing Our Best to the Midwest.

CarmelaFoods.com
18350 15 Mile Road
Fraser, MI 48026
(586) 294-3437

CARMELA

SCAN HERE

