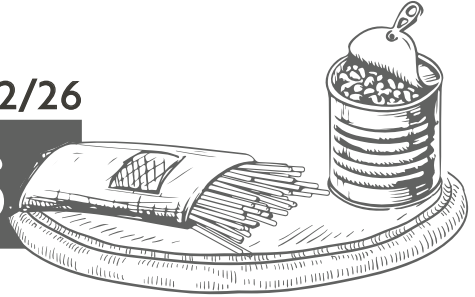


# CARMELA

VALID 12 /8/25-1/12/26

## DECEMBER RETAIL FEATURES



**\$4.57/PC**

**EAT LOCAL**  
TASTES OF THE GREAT LAKES



Free-range, Amish-raised eggs from non-GMO fed hens on regenerative farms —naturally fresher and richer.

#112	LARGE EGGS RETAIL	15/1 DZ
#113	X LARGE EGGS RETAIL	15/1 DZ

**bakerly**



Bakerly delivers French-inspired baked goods with wholesome ingredients and authentic, bakery-fresh flavor.

ITEM#	DESCRIPTION	PACK SIZE	PRICE
00127B	BRIOCHE ROLLS	12/9 OZ	<b>\$2.08/PC</b>
00628B	BRAIDED BRIOCHE LOAF	7/14 OZ	<b>\$4.65/PC</b>
006299	SLICED BRIOCHE LOAF - NEW PACK	15/14 OZ	<b>\$4.00/PC</b>
00630B	SOFT BRIOCHE BAGUETTE	7/12 OZ	<b>\$4.04/PC</b>
00694B	BRIOCHE DINNER ROLLS	8/9.88 OZ	<b>\$3.28/PC</b>



Soft, buttery sliced brioche loaf and NEW 8-count brioche dinner rolls in clear bags—perfect for premium sandwiches, sliders, and elevated bread baskets.

28181B	CLEAR BAG SLICED BRIOCHE LOAF -NEW	15/17.64OZ	<b>\$3.90/PC</b>
BN007	CLEAR BAG BRIOCHE DINNER ROLLS 8CT	8/9.88 OZ	<b>\$3.29/PC</b>



Avalon Bakery crafts artisanal desserts and pastries with time-honored techniques and rich, satisfying taste.

ITEM#	DESCRIPTION	PACK SIZE	PRICE
34038A	CASS AVENUE CARROT CAKE RETAIL 8X8"	6 CT	<b>\$12.75/PC</b>
34045A	CADILLAC SQU CHOC CAKE RETAIL 8X8"	6 CT	<b>\$10.92/PC</b>
34267A	SEA SALT CHOC CHUNK COOKIE RETAIL	9/6 PK	<b>\$5.94/PC</b>
34274A	PEANUT BUTTER COOKIE RETAIL	9/6 PK	<b>\$5.94/PC</b>
34311A	TRAIL MIX OATMEAL RAISIN COOKIE	9/6 PK	<b>\$5.94/PC</b>
34328A	DOUBLE CHOC PLANT BASED COOKIE RET	9/6 PK	<b>\$5.94/PC</b>



Don't miss out! Subscribe to Carmela emails to unlock more incredible deals and exclusive offers!

**CARMELA**

Tel: (586) 294-3437  
info@carmelafoods.com  
www.CarmelaFoods.com

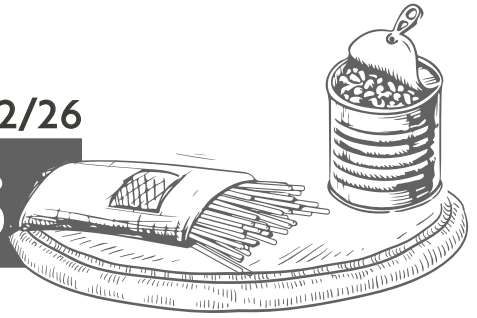
SCAN HERE



# CARMELA

VALID 12 /8/25-1/12/26

## DECEMBER RETAIL FEATURES



Papa's Kitchen serves up comforting, homestyle flavors inspired by family recipes and crafted with heart.

ITEM#	DESCRIPTION	PACK SIZE	PRICE
57450	ORIGINAL PINK GREEK DRESSING	6/12 OZ	\$5.83 /PC
57451	FRESH HERB VINAIGRETTE DRESSING	6/12 OZ	\$5.83 /PC
57452	CREAMY DILL DRESSING	6/12 OZ	\$5.83 /PC
57453	MAPLE HARVEST DRESSING	6/12 OZ	\$5.83 /PC
74553	GREEN GODDESS DRESSING	6/12 OZ	\$5.83 /PC

**FERRIS**  
COFFEE CO



Bold, game-day ready Detroit Lions coffee in convenient cans and ground bags—perfect for tailgates, early kickoffs, and devoted fans who brew blue.

#45400	DEN BLEND - DETROIT LIONS CAN COFFEE	6/16 OZ	\$13.65/PC
#35015	DETROIT LIONS COFFEE GROUND BAG	6/12 OZ	\$8.76/PC



Kitchen Basics delivers rich, slow-simmered broths that bring depth and real home-made flavor to every dish.

ITEM#	DESCRIPTION	PACK SIZE	PRICE
34503	CHICKEN STOCK - UNSALTED 32 OZ	12/32 OZ	\$2.33/PC
34031	SEAFOOD STOCK 32OZ	12/32 OZ	\$2.33/PC
34011	BEEF STOCK 32 OZ	12/32 OZ	\$2.33/PC
34513	BEEF STOCK - UNSALTED 32 OZ	12/32 OZ	\$2.33/PC
34026	TURKEY STOCK 32 OZ	12/32 OZ	\$2.33/PC
34001	CHICKEN STOCK 32 OZ	12/32 OZ	\$2.33/PC
34021	VEGETABLE STOCK UNSALTED 32 OZ	12/32 OZ	\$2.33/PC



M Salt enhances any meal with its perfectly balanced blend of premium sea salt and bold, savory spices.

S00200M	MICHIGAN SALTED M SALT	12/16 OZ	\$13.79/PC
S21711	M SALT 5.5 OZ	24/5.5 OZ	\$5.56 /PC

Don't miss out! Subscribe to Carmela emails to unlock more incredible deals and exclusive offers!

# CARMELA

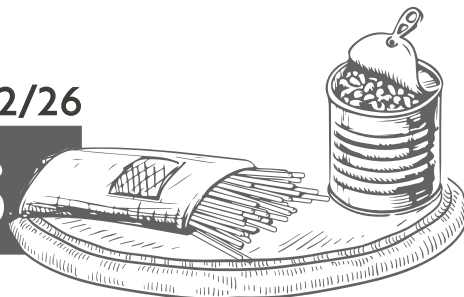
Tel: (586) 294-3437  
info@carmelafoods.com  
www.CarmelaFoods.com

SCAN HERE



VALID 12 /8/25-1/12/26

## DECEMBER RETAIL FEATURES



GREAT LAKES  
FARM  
TO FREEZER



Great Lakes Farm To Freezer delivers farm-fresh produce flash-frozen at peak flavor for unmatched quality and convenience.

ITEM#	DESCRIPTION	PACK SIZE	PRICE
CFR20102	APPLE SLICES- FROZEN	12/2 LB	\$5.99/BAG
CVG41002	TRADITIONAL ROOT CROP MIX	12/2 LB	\$6.38/BAG
CVG41102	TRADITIONAL SWEET POTATO	12/2 LB	\$6.85/BAG

\$7.32/PC



South Chicago Packing Co. supplies premium animal fats and oils crafted for rich flavor and high-performance cooking.

80352 WAGYU BEEF SPRAY CAN TALLOW 6/7 OZ



Popzup creates clean, craft-style popcorn made with simple ingredients for pure, irresistible crunch.

ITEM#	DESCRIPTION	PACK SIZE	PRICE
00034	BUTTER ME UP POPCORN	12/5OZ	\$3.89/PC
000360	CHEESIE HERBIE POPCORN	12/5OZ	\$3.89/PC
00037	MAPLE CINNAMON TOAST POPCORN	12/5OZ	\$3.89/PC
600032	CHEDDAR HEAD POPCORN	12/5OZ	\$3.89/PC
65932	TRUFFLE BUTTER / BLACK PEPPERCORN	12/4OZ	\$3.89/PC

\$4.81/PC



Rich, small-batch ice cream with true, old-fashioned taste. Red and green peppermint candy in mint ice cream.

G218 PEPPERMINT STICK ICE CREAM 1/3 GAL

Don't miss out! Subscribe to Carmela emails to unlock more incredible deals and exclusive offers!

CARMELA

Tel: (586) 294-3437  
info@carmelafoods.com  
www.CarmelaFoods.com

SCAN HERE



# CARMELA

VALID 12 /8/25-1/12/26

## DECEMBER FOOD SERVICE FEATURES



ITEM#	DESCRIPTION	PACK SIZE	PRICE
Y300	GARGANELLI ROMAGNOLI	1/6.6 LB	\$6.21/LB



ITEM#	DESCRIPTION	PACK SIZE	PRICE
61101	CHESTNUTS, PEELED IQF	10/2LB	\$8.99/LB
62527	GLUTEN-FREE CARAMEL CHEESECAKE	2/10-4.1OZ	\$3.70/EA
62205W	OPERA STRIP CAKE	6/28.2 OZ	\$0.97/ OZ
62204W	STRAWBERRY STRIP CAKE	6/33OZ	\$0.87/OZ

\$34.38/PC



Rich, small-batch ice cream with true, old-fashioned taste. Red and green peppermint candy in mint ice cream.

G157 PEPPERMINT STICK ICE CREAM 1/3 GAL



ITEM#	DESCRIPTION	PACK SIZE	PRICE
15743	ARANCINI 2OZ SICILIAN MEAT	2/5 LB	\$0.85/PC
15781	ARANCINI 2OZ - ITAL. BEEF & GIARD.	2/5 LB	\$0.85/PC
15811	ARANCINI - MAC AND CHEESE 1OZ	2/5 LB	\$0.85/PC
15996	ARANCINI 2OZ - SAUSAGE & PEPPERS	2/5 LB	\$0.85/PC
30277	ARANCINI 2OZ - SPINACH RICOTTA	2/5 LB	\$0.85/PC

\$4.33/PC



#111 LARGE BULK EGGS

**EAT LOCAL**  
TASTES OF THE GREAT LAKES

Free-range, Amish-raised eggs from non-GMO fed hens on regenerative farms —naturally fresher, richer, and better for your menu.

1/15 DZ

\$1.87/PC



#74241

3.5 OZ ALMOND CROISSANT

24/3.5OZ

*Madeline's*  
PÂTISSERIE

A flaky, buttery croissant filled with almond cream and topped with sliced almonds- perfect for brunch buffets, coffee-bars.

Don't miss out! Subscribe to Carmela emails to unlock more incredible deals and exclusive offers!

CARMELA

Tel: (586) 294-3437  
info@carmelafoods.com  
www.CarmelaFoods.com

SCAN HERE

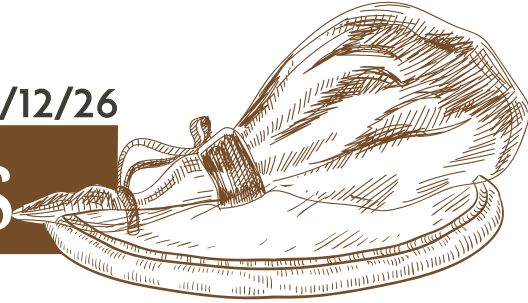




# CARMELA

VALID 12 /8/25-1/12/26

## DECEMBER MEAT & SEAFOOD FEATURES



PREORDER



**\$4.99/LB**



Bell & Evans is known for its humanely raised, 100% air-chilled chicken that delivers exceptional tenderness and clean, natural flavor.

#22070 CHICKEN GROUND 100 % BREAST 12/1 LB

PREORDER



**\$6.09/LB**



Bell & Evans has spent generations perfecting premium chicken through thoughtful, humane farming.

#22163 ORGANIC CHICKEN GROUND 12/1 LB



WILD. NATURAL. SUSTAINABLE.



Premium venison French racks and elk striploins—tender, lean, and deeply flavorful—perfect for grilling or roasting as upscale center-of-plate stars and chef-driven tasting entrées.

VN03FLZF	VENISON FRENCH RACK 8 BONE	4/2.5LB	<b>\$21.79/LB</b>
EL02FLZF	ELK STRIPLOIN DESKINNED 4LB AVG	6/4LB	<b>\$24.15/LB</b>

**\$3.99/LB**



PORK SHANK CC  
VOLCANO 22OZ AVG  
#66308 10/22OZ

**\$2.99/LB**



PORK BUTT BONE-IN  
#66201 6/9LB

**\$3.25/LB**



PORK BUTT  
BONELESS  
#66202 6/8 LB

**\$7.49/LB**



PORK 9 RIB RACK  
FRENCHED CHINE OFF  
#56150 2/7LB

**\$14.99/LB**



PORK TOMAHAWK  
14-15 OZ  
#10906 12/15 OZ



Sweet, succulent crab legs with rich, delicate meat and impressive presentation—perfect for center-of-plate features, chilled platters, seafood towers, and special-occasion menus.

#20069	CRAB, KNG RED LEG & CLW 6/9 USA	20 LBS	<b>\$94.60/LB</b>
#200912	CRAB, KNG RED LEG & CLW 9/12 USA	20 LBS	<b>\$88.50/LB</b>
#20065	CRAB, KNG GOLD LEG&CLW 16/22 USA	20 LBS	<b>\$57.99/LB</b>

Don't miss out! Subscribe to Carmela emails to unlock more incredible deals and exclusive offers!

CARMELA

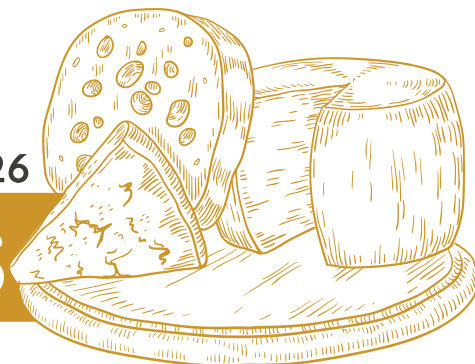
Tel: (586) 294-3437  
info@carmelafoods.com  
www.CarmelaFoods.com



# CARMELA

VALID 12 /8/25-1/12/26

## DECEMBER CHEESE BOARD FEATURES



### THE DECEMBER BOARD

SCAN TO ORDER



BLUE SALAD BLEND  
12/4 OZ  
#80904

**\$1.75/PC**



A creamy, tangy blue cheese blend with a bold, balanced flavor and crumbly texture—perfect for salads and gourmet burger toppings.

### CELLO



MARSCAPONE  
6/1 LB  
#0105C

**\$5.06/PC**



Rich, smooth cheese with delicate vanilla sweetness and slight tang, made from Wisconsin cream and perfect for desserts, sauces and creamy fillings.



RICOTTA HAND  
DIPPED  
8/1.5 LB  
#1169

**\$6.81/PC**



A fresh, creamy ricotta with milky sweetness and pillowy curds—ideal for lasagna, baked pastas, fillings, spreads, and Italian desserts.

### Volpi



**\$6.45/PC**

A spicy trio including savory Spicy Coppa, Spicy Sopressata and bold Peppered Salami.

TRIO COPPA SOPR  
PEPPER SALAMI  
12/6 OZ  
#16999V

### MAESTRI

*Charcuterie Masters*



**\$4.38/PC**

Dry-cured Italian pancetta strips—lean and lightly smoked with refined flavor—perfect for carbonara, pasta, & hearty soups.

PANCETTA  
STRIPS  
10/3.5 OZ  
#SLD001

Don't miss out! Subscribe to Carmela emails to unlock more incredible deals and exclusive offers!

## CARMELA

Tel: (586) 294-3437  
info@carmelafoods.com  
www.CarmelaFoods.com

SCAN HERE

